

Report No.: HLF25005437E

Date: Jun 4, 2025

Page 1 of 22

**Applicant** : Sunlu (Guangdong) Technology Co., Ltd.

**Address** : No. 162 Tanlong North Road, Tanzhou Town, Zhongshan City  
Zhongshan, Guangdong, 528467, China

**The following sample(s) was/were submitted and identified on behalf of the client as:**

Sample Name : Filament Dryer (110V Version)

Sample Model : SP2

Sample Style : /

Sample Received Date : May 27, 2025

Test Completed Date : Jun 4, 2025

Test Method : 1, Screening test method: IEC62321-3-1:2013/XRF  
2, Wet chemical test method:  
Lead(Pb): IEC62321-5:2013/ICP-OES  
Cadmium(Cd): IEC62321-5:2013/ICP-OES  
Mercury(Hg): IEC62321-4:2013+A1:2017/ICP-OES  
Hexavalent Chromium(CrVI): IEC62321-7-1:2015/UV-VIS and  
IEC62321-7-2:2017/UV-VIS  
Polybrominated Biphenyls (PBBs): IEC62321-6:2015 /GC-MS  
Polybrominated Biphenyl Ethers(PBDEs): IEC62321-6:2015 /GC-MS  
3, Phthalates test method: IEC 62321-8:2017 / GC-MS

Test Results : Refer to the next page(s).

Test Requested	Conclusion
RoHS Directive (EU)2015/863 amending Annex II to Directive 2011/65/EU—Lead(Pb), Cadmium(Cd), Mercury(Hg), Hexavalent Chromium(CrVI), Polybrominated Biphenyls (PBBs), Polybrominated Biphenyl Ethers(PBDEs), Dibutyl phthalate (DBP), Butyl benzyl phthalate(BBP), Bis-(2-ethylhexyl)phthalate(DEHP), Di-iso-butyl ortho-phthalate(DIBP)	PASS

scan to check the report



HLF25005437E

Authorized Signature:

Technology Manager

In no circumstances shall the Company's responsibility extend beyond inspection, testing and reporting upon the samples actually drawn from the bulk and inspected, tested and surveyed by the Company and any inference to be drawn from the results of such inspection or survey or testing shall be entirely in the discretion and at the sole and exclusive responsibility of the Principal. This test report cannot be reproduced except in full.

**FLION TESTING TECHNOLOGIES**

Add: Gangzi Industrial Park, Furong Industrial Area, Xinqiao Village, Shajing Town, Bao'an District, Shenzhen City

Tel : 86-0755-2724 8885

Fax : 86-0755-2746 0090

Http://www.cnfft.com



**Test Results:**

Part No.	Results	Cd	Pb	Hg	Cr <sup>6+</sup>	PBBs	PBDEs	Conclusion on RoHS
1	EDXRF	BL	BL	BL	BL	BL	BL	--
	Wet Chemical Testing	--	--	--	--	--	--	Comply
2	EDXRF	BL	BL	BL	BL	BL	BL	--
	Wet Chemical Testing	--	--	--	--	--	--	Comply
3	EDXRF	BL	BL	BL	BL	BL	BL	--
	Wet Chemical Testing	--	--	--	--	--	--	Comply
4	EDXRF	BL	BL	BL	BL	BL	BL	--
	Wet Chemical Testing	--	--	--	--	--	--	Comply
5	EDXRF	BL	BL	BL	BL	BL	BL	--
	Wet Chemical Testing	--	--	--	--	--	--	Comply
6	EDXRF	BL	BL	BL	IN	--	--	--
	Wet Chemical Testing	--	--	--	N.D.	--	--	Comply
7	EDXRF	BL	BL	BL	IN	--	--	--
	Wet Chemical Testing	--	--	--	N.D.	--	--	Comply
8	EDXRF	BL	IN	BL	IN	--	--	--
	Wet Chemical Testing	--	N.D.	--	N.D.	--	--	Comply
9	EDXRF	BL	BL	BL	IN	BL	BL	--
	Wet Chemical Testing	--	--	--	N.D.	--	--	Comply
10	EDXRF	BL	BL	BL	BL	BL	BL	--
	Wet Chemical Testing	--	--	--	--	--	--	Comply
11	EDXRF	BL	BL	BL	BL	BL	BL	--
	Wet Chemical Testing	--	--	--	--	--	--	Comply
12	EDXRF	BL	BL	BL	BL	--	--	--
	Wet Chemical Testing	--	--	--	--	--	--	Comply
13	EDXRF	BL	BL	BL	BL	--	--	--
	Wet Chemical Testing	--	--	--	--	--	--	Comply
14	EDXRF	BL	BL	BL	BL	--	--	--
	Wet Chemical Testing	--	--	--	--	--	--	Comply

In no circumstances shall the Company's responsibility extend beyond inspection, testing and reporting upon the samples actually drawn from the bulk and inspected, tested and surveyed by the Company and any inference to be drawn from the results of such inspection or survey or testing shall be entirely in the discretion and at the sole and exclusive responsibility of the Principal. This test report cannot be reproduced except in full.

**FLION TESTING TECHNOLOGIES**

Add: Gangzi Industrial Park, Furong Industrial Area, Xinqiao Village, Shajing Town, Bao'an District, Shenzhen City

Tel : 86-0755-2724 8885

Fax : 86-0755-2746 0090

Http://www.cnfft.com



Part No.	Results	Cd	Pb	Hg	Cr <sup>6+</sup>	PBBs	PBDEs	Conclusion on RoHS
15	EDXRF	BL	BL	BL	BL	--	--	--
	Wet Chemical Testing	--	--	--	--	--	--	Comply
16	EDXRF	BL	BL	BL	BL	--	--	--
	Wet Chemical Testing	--	--	--	--	--	--	Comply
17	EDXRF	BL	BL	BL	BL	--	--	--
	Wet Chemical Testing	--	--	--	--	--	--	Comply
18	EDXRF	BL	BL	BL	BL	--	--	--
	Wet Chemical Testing	--	--	--	--	--	--	Comply
19	EDXRF	BL	BL	BL	BL	--	--	--
	Wet Chemical Testing	--	--	--	--	--	--	Comply
20	EDXRF	BL	BL	BL	BL	--	--	--
	Wet Chemical Testing	--	--	--	--	--	--	Comply
21	EDXRF	BL	BL	BL	BL	IN	IN	--
	Wet Chemical Testing	--	--	--	--	N.D.	N.D.	Comply
22	EDXRF	BL	BL	BL	BL	BL	BL	--
	Wet Chemical Testing	--	--	--	--	--	--	Comply
23	EDXRF	BL	BL	BL	BL	BL	BL	--
	Wet Chemical Testing	--	--	--	--	--	--	Comply
24	EDXRF	BL	BL	BL	BL	--	--	--
	Wet Chemical Testing	--	--	--	--	--	--	Comply
25	EDXRF	BL	BL	BL	BL	--	--	--
	Wet Chemical Testing	--	--	--	--	--	--	Comply
26	EDXRF	BL	BL	BL	BL	BL	BL	--
	Wet Chemical Testing	--	--	--	--	--	--	Comply
27	EDXRF	BL	BL	BL	BL	--	--	--
	Wet Chemical Testing	--	--	--	--	--	--	Comply
28	EDXRF	BL	BL	BL	BL	BL	BL	--
	Wet Chemical Testing	--	--	--	--	--	--	Comply

In no circumstances shall the Company's responsibility extend beyond inspection, testing and reporting upon the samples actually drawn from the bulk and inspected, tested and surveyed by the Company and any inference to be drawn from the results of such inspection or survey or testing shall be entirely in the discretion and at the sole and exclusive responsibility of the Principal. This test report cannot be reproduced except in full.

**FLION TESTING TECHNOLOGIES**

Add: Gangzi Industrial Park, Furong Industrial Area, Xinqiao Village, Shajing Town, Bao'an District, Shenzhen City

Tel : 86-0755-2724 8885

Fax : 86-0755-2746 0090

Http://www.cnfft.com



Part No.	Results	Cd	Pb	Hg	Cr <sup>6+</sup>	PBBs	PBDEs	Conclusion on RoHS
29	EDXRF	BL	BL	BL	BL	BL	BL	--
	Wet Chemical Testing	--	--	--	--	--	--	Comply
30	EDXRF	BL	BL	BL	BL	BL	BL	--
	Wet Chemical Testing	--	--	--	--	--	--	Comply
31	EDXRF	BL	BL	BL	BL	BL	BL	--
	Wet Chemical Testing	--	--	--	--	--	--	Comply
32	EDXRF	BL	BL	BL	BL	BL	BL	--
	Wet Chemical Testing	--	--	--	--	--	--	Comply
33	EDXRF	BL	BL	BL	BL	BL	BL	--
	Wet Chemical Testing	--	--	--	--	--	--	Comply
34	EDXRF	BL	BL	BL	IN	--	--	--
	Wet Chemical Testing	--	--	--	N.D.	--	--	Comply
35	EDXRF	BL	BL	BL	IN	--	--	--
	Wet Chemical Testing	--	--	--	N.D.	--	--	Comply
36	EDXRF	BL	IN	BL	IN	--	--	--
	Wet Chemical Testing	--	77ppm	--	N.D.	--	--	Comply
37	EDXRF	BL	BL	BL	BL	BL	BL	--
	Wet Chemical Testing	--	--	--	--	--	--	Comply
38	EDXRF	BL	BL	BL	BL	BL	BL	--
	Wet Chemical Testing	--	--	--	--	--	--	Comply
39	EDXRF	BL	BL	BL	BL	BL	BL	--
	Wet Chemical Testing	--	--	--	--	--	--	Comply
40	EDXRF	BL	BL	BL	BL	BL	BL	--
	Wet Chemical Testing	--	--	--	--	--	--	Comply
41	EDXRF	BL	BL	BL	BL	BL	BL	--
	Wet Chemical Testing	--	--	--	--	--	--	Comply
42	EDXRF	BL	BL	BL	BL	BL	BL	--
	Wet Chemical Testing	--	--	--	--	--	--	Comply

In no circumstances shall the Company's responsibility extend beyond inspection, testing and reporting upon the samples actually drawn from the bulk and inspected, tested and surveyed by the Company and any inference to be drawn from the results of such inspection or survey or testing shall be entirely in the discretion and at the sole and exclusive responsibility of the Principal. This test report cannot be reproduced except in full.

**FLION TESTING TECHNOLOGIES**

Add: Gangzi Industrial Park, Furong Industrial Area, Xinqiao Village, Shajing Town, Bao'an District, Shenzhen City

Tel : 86-0755-2724 8885

Fax : 86-0755-2746 0090

Http://www.cnfft.com



Part No.	Results	Cd	Pb	Hg	Cr <sup>6+</sup>	PBBs	PBDEs	Conclusion on RoHS
43	EDXRF	BL	BL	BL	BL	BL	BL	--
	Wet Chemical Testing	--	--	--	--	--	--	Comply
44	EDXRF	BL	BL	BL	BL	BL	BL	--
	Wet Chemical Testing	--	--	--	--	--	--	Comply
45	EDXRF	BL	BL	BL	BL	BL	BL	--
	Wet Chemical Testing	--	--	--	--	--	--	Comply
46	EDXRF	BL	BL	BL	BL	BL	BL	--
	Wet Chemical Testing	--	--	--	--	--	--	Comply
47	EDXRF	BL	BL	BL	BL	BL	BL	--
	Wet Chemical Testing	--	--	--	--	--	--	Comply
48	EDXRF	BL	BL	BL	BL	BL	BL	--
	Wet Chemical Testing	--	--	--	--	--	--	Comply
49	EDXRF	BL	BL	BL	BL	--	--	--
	Wet Chemical Testing	--	--	--	--	--	--	Comply
50	EDXRF	BL	BL	BL	BL	BL	BL	--
	Wet Chemical Testing	--	--	--	--	--	--	Comply
51	EDXRF	BL	BL	BL	BL	--	--	--
	Wet Chemical Testing	--	--	--	--	--	--	Comply
52	EDXRF	BL	BL	BL	BL	--	--	--
	Wet Chemical Testing	--	--	--	--	--	--	Comply
53	EDXRF	BL	BL	BL	BL	--	--	--
	Wet Chemical Testing	--	--	--	--	--	--	Comply
54	EDXRF	BL	BL	BL	BL	--	--	--
	Wet Chemical Testing	--	--	--	--	--	--	Comply
55	EDXRF	BL	IN	BL	BL	--	--	--
	Wet Chemical Testing	--	N.D.	--	--	--	--	Comply
56	EDXRF	BL	BL	BL	BL	IN	IN	--
	Wet Chemical Testing	--	--	--	--	N.D.	N.D.	Comply

In no circumstances shall the Company's responsibility extend beyond inspection, testing and reporting upon the samples actually drawn from the bulk and inspected, tested and surveyed by the Company and any inference to be drawn from the results of such inspection or survey or testing shall be entirely in the discretion and at the sole and exclusive responsibility of the Principal. This test report cannot be reproduced except in full.

**FLION TESTING TECHNOLOGIES**

Add: Gangzi Industrial Park, Furong Industrial Area, Xinqiao Village, Shajing Town, Bao'an District, Shenzhen City

Tel : 86-0755-2724 8885 Fax : 86-0755-2746 0090 Http://www.cnfft.com



Part No.	Results	Cd	Pb	Hg	Cr <sup>6+</sup>	PBBs	PBDEs	Conclusion on RoHS
57	EDXRF	BL	BL	BL	BL	--	--	--
	Wet Chemical Testing	--	--	--	--	--	--	Comply
58	EDXRF	BL	BL	BL	BL	BL	BL	--
	Wet Chemical Testing	--	--	--	--	--	--	Comply
59	EDXRF	BL	BL	BL	BL	BL	BL	--
	Wet Chemical Testing	--	--	--	--	--	--	Comply
60	EDXRF	BL	BL	BL	IN	--	--	--
	Wet Chemical Testing	--	--	--	N.D.	--	--	Comply
61	EDXRF	BL	BL	BL	IN	--	--	--
	Wet Chemical Testing	--	--	--	N.D.	--	--	Comply
62	EDXRF	BL	BL	BL	BL	--	--	--
	Wet Chemical Testing	--	--	--	--	--	--	Comply
63	EDXRF	BL	BL	BL	BL	BL	BL	--
	Wet Chemical Testing	--	--	--	--	--	--	Comply
64	EDXRF	BL	BL	BL	BL	BL	BL	--
	Wet Chemical Testing	--	--	--	--	--	--	Comply
65	EDXRF	BL	BL	BL	BL	BL	BL	--
	Wet Chemical Testing	--	--	--	--	--	--	Comply
66	EDXRF	BL	BL	BL	BL	IN	IN	--
	Wet Chemical Testing	--	--	--	--	N.D.	N.D.	Comply
67	EDXRF	BL	BL	BL	BL	BL	BL	--
	Wet Chemical Testing	--	--	--	--	--	--	Comply
68	EDXRF	BL	BL	BL	BL	BL	BL	--
	Wet Chemical Testing	--	--	--	--	--	--	Comply
69	EDXRF	BL	BL	BL	BL	--	--	--
	Wet Chemical Testing	--	--	--	--	--	--	Comply
70	EDXRF	BL	BL	BL	BL	BL	BL	--
	Wet Chemical Testing	--	--	--	--	--	--	Comply

In no circumstances shall the Company's responsibility extend beyond inspection, testing and reporting upon the samples actually drawn from the bulk and inspected, tested and surveyed by the Company and any inference to be drawn from the results of such inspection or survey or testing shall be entirely in the discretion and at the sole and exclusive responsibility of the Principal. This test report cannot be reproduced except in full.

**FLION TESTING TECHNOLOGIES**

Add: Gangzi Industrial Park, Furong Industrial Area, Xinqiao Village, Shajing Town, Bao'an District, Shenzhen City

Tel : 86-0755-2724 8885

Fax : 86-0755-2746 0090

Http://www.cnfft.com



Part No.	Results	Cd	Pb	Hg	Cr <sup>6+</sup>	PBBs	PBDEs	Conclusion on RoHS
71	EDXRF	BL	BL	BL	BL	BL	BL	--
	Wet Chemical Testing	--	--	--	--	--	--	Comply
72	EDXRF	BL	BL	BL	BL	BL	BL	--
	Wet Chemical Testing	--	--	--	--	--	--	Comply
73	EDXRF	BL	BL	BL	BL	BL	BL	--
	Wet Chemical Testing	--	--	--	--	--	--	Comply
74	EDXRF	BL	BL	BL	BL	BL	BL	--
	Wet Chemical Testing	--	--	--	--	--	--	Comply
75	EDXRF	BL	BL	BL	BL	BL	BL	--
	Wet Chemical Testing	--	--	--	--	--	--	Comply
76	EDXRF	BL	BL	BL	BL	IN	IN	--
	Wet Chemical Testing	--	--	--	--	N.D.	N.D.	Comply
77	EDXRF	BL	BL	BL	BL	--	--	--
	Wet Chemical Testing	--	--	--	--	--	--	Comply
78	EDXRF	BL	BL	BL	BL	--	--	--
	Wet Chemical Testing	--	--	--	--	--	--	Comply
79	EDXRF	BL	BL	BL	BL	--	--	--
	Wet Chemical Testing	--	--	--	--	--	--	Comply
80	EDXRF	BL	BL	BL	BL	--	--	--
	Wet Chemical Testing	--	--	--	--	--	--	Comply
81	EDXRF	BL	BL	BL	BL	IN	IN	--
	Wet Chemical Testing	--	--	--	--	N.D.	N.D.	Comply
82	EDXRF	BL	BL	BL	BL	BL	BL	--
	Wet Chemical Testing	--	--	--	--	--	--	Comply
83	EDXRF	BL	BL	BL	BL	BL	BL	--
	Wet Chemical Testing	--	--	--	--	--	--	Comply
84	EDXRF	BL	BL	BL	BL	BL	BL	--
	Wet Chemical Testing	--	--	--	--	--	--	Comply

In no circumstances shall the Company's responsibility extend beyond inspection, testing and reporting upon the samples actually drawn from the bulk and inspected, tested and surveyed by the Company and any inference to be drawn from the results of such inspection or survey or testing shall be entirely in the discretion and at the sole and exclusive responsibility of the Principal. This test report cannot be reproduced except in full.

**FLION TESTING TECHNOLOGIES**

Add: Gangzi Industrial Park, Furong Industrial Area, Xinqiao Village, Shajing Town, Bao'an District, Shenzhen City

Tel : 86-0755-2724 8885 Fax : 86-0755-2746 0090 Http://www.cnfft.com



Part No.	Results	Cd	Pb	Hg	Cr <sup>6+</sup>	PBBs	PBDEs	Conclusion on RoHS
85	EDXRF	BL	BL	BL	BL	--	--	--
	Wet Chemical Testing	--	--	--	--	--	--	Comply
86	EDXRF	BL	BL	BL	BL	--	--	--
	Wet Chemical Testing	--	--	--	--	--	--	Comply
87	EDXRF	BL	BL	BL	BL	BL	BL	--
	Wet Chemical Testing	--	--	--	--	--	--	Comply
88	EDXRF	BL	BL	BL	BL	BL	BL	--
	Wet Chemical Testing	--	--	--	--	--	--	Comply
89	EDXRF	BL	BL	BL	BL	BL	BL	--
	Wet Chemical Testing	--	--	--	--	--	--	Comply
90	EDXRF	BL	BL	BL	BL	IN	IN	--
	Wet Chemical Testing	--	--	--	--	N.D.	N.D.	Comply
91	EDXRF	BL	BL	BL	BL	BL	BL	--
	Wet Chemical Testing	--	--	--	--	--	--	Comply
92	EDXRF	BL	BL	BL	BL	IN	IN	--
	Wet Chemical Testing	--	--	--	--	N.D.	N.D.	Comply
93	EDXRF	BL	BL	BL	BL	IN	IN	--
	Wet Chemical Testing	--	--	--	--	N.D.	N.D.	Comply
94	EDXRF	BL	BL	BL	BL	BL	BL	--
	Wet Chemical Testing	--	--	--	--	--	--	Comply
95	EDXRF	BL	BL	BL	BL	--	--	--
	Wet Chemical Testing	--	--	--	--	--	--	Comply
96	EDXRF	BL	BL	BL	BL	BL	BL	--
	Wet Chemical Testing	--	--	--	--	--	--	Comply
97	EDXRF	BL	BL	BL	BL	BL	BL	--
	Wet Chemical Testing	--	--	--	--	--	--	Comply
98	EDXRF	BL	BL	BL	BL	BL	BL	--
	Wet Chemical Testing	--	--	--	--	--	--	Comply

In no circumstances shall the Company's responsibility extend beyond inspection, testing and reporting upon the samples actually drawn from the bulk and inspected, tested and surveyed by the Company and any inference to be drawn from the results of such inspection or survey or testing shall be entirely in the discretion and at the sole and exclusive responsibility of the Principal. This test report cannot be reproduced except in full.

**FLION TESTING TECHNOLOGIES**

Add: Gangzi Industrial Park, Furong Industrial Area, Xinqiao Village, Shajing Town, Bao'an District, Shenzhen City

Tel : 86-0755-2724 8885 Fax : 86-0755-2746 0090 Http://www.cnfft.com



Part No.	Results	Cd	Pb	Hg	Cr <sup>6+</sup>	PBBs	PBDEs	Conclusion on RoHS
99	EDXRF	BL	BL	BL	BL	IN	IN	--
	Wet Chemical Testing	--	--	--	--	N.D.	N.D.	Comply
100	EDXRF	BL	BL	BL	IN	--	--	--
	Wet Chemical Testing	--	--	--	N.D.	--	--	Comply
101	EDXRF	BL	BL	BL	BL	BL	BL	--
	Wet Chemical Testing	--	--	--	--	--	--	Comply
102	EDXRF	BL	BL	BL	IN	--	--	--
	Wet Chemical Testing	--	--	--	N.D.	--	--	Comply
103	EDXRF	BL	BL	BL	IN	--	--	--
	Wet Chemical Testing	--	--	--	N.D.	--	--	Comply
104	EDXRF	BL	BL	BL	BL	BL	BL	--
	Wet Chemical Testing	--	--	--	--	--	--	Comply
105	EDXRF	BL	BL	BL	BL	--	--	--
	Wet Chemical Testing	--	--	--	--	--	--	Comply
106	EDXRF	BL	BL	BL	BL	IN	IN	--
	Wet Chemical Testing	--	--	--	--	N.D.	N.D.	Comply
107	EDXRF	BL	BL	BL	BL	BL	BL	--
	Wet Chemical Testing	--	--	--	--	--	--	Comply
108	EDXRF	BL	BL	BL	BL	BL	BL	--
	Wet Chemical Testing	--	--	--	--	--	--	Comply
109	EDXRF	BL	BL	BL	BL	BL	BL	--
	Wet Chemical Testing	--	--	--	--	--	--	Comply
110	EDXRF	BL	BL	BL	BL	BL	BL	--
	Wet Chemical Testing	--	--	--	--	--	--	Comply
111	EDXRF	BL	BL	BL	BL	--	--	--
	Wet Chemical Testing	--	--	--	--	--	--	Comply
112	EDXRF	BL	BL	BL	IN	--	--	--
	Wet Chemical Testing	--	--	--	N.D.	--	--	Comply

In no circumstances shall the Company's responsibility extend beyond inspection, testing and reporting upon the samples actually drawn from the bulk and inspected, tested and surveyed by the Company and any inference to be drawn from the results of such inspection or survey or testing shall be entirely in the discretion and at the sole and exclusive responsibility of the Principal. This test report cannot be reproduced except in full.

**FLION TESTING TECHNOLOGIES**

Add: Gangzi Industrial Park, Furong Industrial Area, Xinqiao Village, Shajing Town, Bao'an District, Shenzhen City

Tel : 86-0755-2724 8885 Fax : 86-0755-2746 0090 Http://www.cnfft.com



Part No.	Results	Cd	Pb	Hg	Cr <sup>6+</sup>	PBBs	PBDEs	Conclusion on RoHS
113	EDXRF	BL	BL	BL	BL	IN	IN	--
	Wet Chemical Testing	--	--	--	--	N.D.	N.D.	Comply
114	EDXRF	BL	BL	BL	BL	IN	IN	--
	Wet Chemical Testing	--	--	--	--	N.D.	N.D.	Comply
115	EDXRF	BL	BL	BL	BL	BL	BL	--
	Wet Chemical Testing	--	--	--	--	--	--	Comply
116	EDXRF	BL	BL	BL	BL	IN	IN	--
	Wet Chemical Testing	--	--	--	--	N.D.	N.D.	Comply
117	EDXRF	BL	BL	BL	BL	--	--	--
	Wet Chemical Testing	--	--	--	--	--	--	Comply
118	EDXRF	BL	BL	BL	BL	IN	IN	--
	Wet Chemical Testing	--	--	--	--	N.D.	N.D.	Comply
119	EDXRF	BL	BL	BL	IN	--	--	--
	Wet Chemical Testing	--	--	--	N.D.	--	--	Comply
120	EDXRF	BL	BL	BL	IN	--	--	--
	Wet Chemical Testing	--	--	--	N.D.	--	--	Comply
121	EDXRF	BL	BL	BL	BL	BL	BL	--
	Wet Chemical Testing	--	--	--	--	--	--	Comply
122	EDXRF	BL	BL	BL	IN	--	--	--
	Wet Chemical Testing	--	--	--	N.D.	--	--	Comply
123	EDXRF	BL	BL	BL	IN	--	--	--
	Wet Chemical Testing	--	--	--	N.D.	--	--	Comply
124	EDXRF	BL	BL	BL	BL	BL	BL	--
	Wet Chemical Testing	--	--	--	--	--	--	Comply
125	EDXRF	BL	BL	BL	BL	BL	BL	--
	Wet Chemical Testing	--	--	--	--	--	--	Comply
126	EDXRF	BL	BL	BL	BL	BL	BL	--
	Wet Chemical Testing	--	--	--	--	--	--	Comply

In no circumstances shall the Company's responsibility extend beyond inspection, testing and reporting upon the samples actually drawn from the bulk and inspected, tested and surveyed by the Company and any inference to be drawn from the results of such inspection or survey or testing shall be entirely in the discretion and at the sole and exclusive responsibility of the Principal. This test report cannot be reproduced except in full.

**FLION TESTING TECHNOLOGIES**

Add: Gangzi Industrial Park, Furong Industrial Area, Xinqiao Village, Shajing Town, Bao'an District, Shenzhen City

Tel : 86-0755-2724 8885

Fax : 86-0755-2746 0090

Http://www.cnfft.com



Part No.	Results	Cd	Pb	Hg	Cr <sup>6+</sup>	PBBs	PBDEs	Conclusion on RoHS
127	EDXRF	BL	BL	BL	BL	IN	IN	--
	Wet Chemical Testing	--	--	--	--	N.D.	N.D.	Comply
128	EDXRF	BL	BL	BL	BL	IN	IN	--
	Wet Chemical Testing	--	--	--	--	N.D.	N.D.	Comply
129	EDXRF	BL	BL	BL	BL	BL	BL	--
	Wet Chemical Testing	--	--	--	--	--	--	Comply
130	EDXRF	BL	BL	BL	BL	IN	IN	--
	Wet Chemical Testing	--	--	--	--	N.D.	N.D.	Comply
131	EDXRF	BL	BL	BL	BL	--	--	--
	Wet Chemical Testing	--	--	--	--	--	--	Comply
132	EDXRF	BL	BL	BL	BL	IN	IN	--
	Wet Chemical Testing	--	--	--	--	N.D.	N.D.	Comply
133	EDXRF	BL	BL	BL	IN	--	--	--
	Wet Chemical Testing	--	--	--	N.D.	--	--	Comply
134	EDXRF	BL	BL	BL	IN	--	--	--
	Wet Chemical Testing	--	--	--	N.D.	--	--	Comply
135	EDXRF	BL	BL	BL	BL	BL	BL	--
	Wet Chemical Testing	--	--	--	--	--	--	Comply
136	EDXRF	BL	BL	BL	IN	--	--	--
	Wet Chemical Testing	--	--	--	N.D.	--	--	Comply
137	EDXRF	BL	BL	BL	IN	--	--	--
	Wet Chemical Testing	--	--	--	N.D.	--	--	Comply
138	EDXRF	BL	BL	BL	BL	BL	BL	--
	Wet Chemical Testing	--	--	--	--	--	--	Comply
139	EDXRF	BL	BL	BL	BL	BL	BL	--
	Wet Chemical Testing	--	--	--	--	--	--	Comply
140	EDXRF	BL	BL	BL	BL	BL	BL	--
	Wet Chemical Testing	--	--	--	--	--	--	Comply

In no circumstances shall the Company's responsibility extend beyond inspection, testing and reporting upon the samples actually drawn from the bulk and inspected, tested and surveyed by the Company and any inference to be drawn from the results of such inspection or survey or testing shall be entirely in the discretion and at the sole and exclusive responsibility of the Principal. This test report cannot be reproduced except in full.

**FLION TESTING TECHNOLOGIES**

Add: Gangzi Industrial Park, Furong Industrial Area, Xinqiao Village, Shajing Town, Bao'an District, Shenzhen City

Tel : 86-0755-2724 8885

Fax : 86-0755-2746 0090

Http://www.cnfft.com



Part No.	Results	Cd	Pb	Hg	Cr <sup>6+</sup>	PBBs	PBDEs	Conclusion on RoHS
141	EDXRF	BL	BL	BL	BL	BL	BL	--
	Wet Chemical Testing	--	--	--	--	--	--	Comply
142	EDXRF	BL	BL	BL	BL	BL	BL	--
	Wet Chemical Testing	--	--	--	--	--	--	Comply
143	EDXRF	BL	BL	BL	BL	--	--	--
	Wet Chemical Testing	--	--	--	--	--	--	Comply
144	EDXRF	BL	BL	BL	BL	BL	BL	--
	Wet Chemical Testing	--	--	--	--	--	--	Comply
145	EDXRF	BL	BL	BL	BL	BL	BL	--
	Wet Chemical Testing	--	--	--	--	--	--	Comply
146	EDXRF	BL	BL	BL	BL	BL	BL	--
	Wet Chemical Testing	--	--	--	--	--	--	Comply
147	EDXRF	BL	BL	BL	BL	BL	BL	--
	Wet Chemical Testing	--	--	--	--	--	--	Comply
148	EDXRF	BL	BL	BL	BL	BL	BL	--
	Wet Chemical Testing	--	--	--	--	--	--	Comply
149	EDXRF	BL	BL	BL	BL	BL	BL	--
	Wet Chemical Testing	--	--	--	--	--	--	Comply
150	EDXRF	BL	BL	BL	IN	--	--	--
	Wet Chemical Testing	--	--	--	N.D.	--	--	Comply
*151	EDXRF	BL	IN	BL	BL	BL	BL	--
	Wet Chemical Testing	--	29360 ppm	--	--	--	--	Exemption
152	EDXRF	BL	BL	BL	BL	BL	BL	--
	Wet Chemical Testing	--	--	--	--	--	--	Comply
153	EDXRF	BL	BL	BL	BL	BL	BL	--
	Wet Chemical Testing	--	--	--	--	--	--	Comply
154	EDXRF	BL	BL	BL	BL	--	--	--
	Wet Chemical Testing	--	--	--	--	--	--	Comply

In no circumstances shall the Company's responsibility extend beyond inspection, testing and reporting upon the samples actually drawn from the bulk and inspected, tested and surveyed by the Company and any inference to be drawn from the results of such inspection or survey or testing shall be entirely in the discretion and at the sole and exclusive responsibility of the Principal. This test report cannot be reproduced except in full.

**FLION TESTING TECHNOLOGIES**

Add: Gangzi Industrial Park, Furong Industrial Area, Xinqiao Village, Shajing Town, Bao'an District, Shenzhen City

Tel : 86-0755-2724 8885

Fax : 86-0755-2746 0090

Http://www.cnfft.com



Part No.	Results	Cd	Pb	Hg	Cr <sup>6+</sup>	PBBs	PBDEs	Conclusion on RoHS
155	EDXRF	BL	BL	BL	BL	BL	BL	--
	Wet Chemical Testing	--	--	--	--	--	--	Comply
156	EDXRF	BL	BL	BL	BL	--	--	--
	Wet Chemical Testing	--	--	--	--	--	--	Comply
157	EDXRF	BL	BL	BL	BL	--	--	--
	Wet Chemical Testing	--	--	--	--	--	--	Comply
158	EDXRF	BL	BL	BL	IN	--	--	--
	Wet Chemical Testing	--	--	--	N.D.	--	--	Comply
159	EDXRF	BL	BL	BL	BL	BL	BL	--
	Wet Chemical Testing	--	--	--	--	--	--	Comply

**Phthalates Test Results:**

Test Item	CAS No.	Test Method / Instrument	MDL (%)	Limit (%)
Dibutyl phthalate (DBP)	84-74-2	IEC 62321-8:2017 / GC-MS	0.005	0.1
Butyl benzyl phthalate (BBP)	85-68-7	IEC 62321-8:2017 / GC-MS	0.005	0.1
Bis-(2-ethylhexyl)phthalate (DEHP)	117-81-7	IEC 62321-8:2017 / GC-MS	0.005	0.1
Di-iso-butyl ortho-phthalate (DIBP)	84-69-5	IEC 62321-8:2017 / GC-MS	0.005	0.1

Test Item	Result (%)							
	1	2	3	4	5	9	10	11
Dibutyl phthalate (DBP)	N.D.	N.D.	N.D.	N.D.	N.D.	N.D.	N.D.	N.D.
Butyl benzyl phthalate (BBP)	N.D.	N.D.	N.D.	N.D.	N.D.	N.D.	N.D.	N.D.
Bis-(2-ethylhexyl)phthalate (DEHP)	N.D.	N.D.	N.D.	N.D.	N.D.	N.D.	N.D.	N.D.
Di-iso-butyl ortho-phthalate (DIBP)	N.D.	N.D.	N.D.	N.D.	N.D.	N.D.	N.D.	N.D.

In no circumstances shall the Company's responsibility extend beyond inspection, testing and reporting upon the samples actually drawn from the bulk and inspected, tested and surveyed by the Company and any inference to be drawn from the results of such inspection or survey or testing shall be entirely in the discretion and at the sole and exclusive responsibility of the Principal. This test report cannot be reproduced except in full.



Test Item	Result (%)							
	16	19	21	22	23	26	28	29
Dibutyl phthalate (DBP)	N.D.	N.D.	N.D.	N.D.	N.D.	N.D.	N.D.	N.D.
Butyl benzyl phthalate (BBP)	N.D.	N.D.	N.D.	N.D.	N.D.	N.D.	N.D.	N.D.
Bis-(2-ethylhexyl)phthalate (DEHP)	N.D.	N.D.	N.D.	N.D.	N.D.	N.D.	N.D.	N.D.
Di-iso-butyl ortho-phthalate (DIBP)	N.D.	N.D.	N.D.	N.D.	N.D.	N.D.	N.D.	N.D.

Test Item	Result (%)							
	30	31	32	33	37	38	39	40
Dibutyl phthalate (DBP)	N.D.	N.D.	N.D.	N.D.	N.D.	N.D.	N.D.	N.D.
Butyl benzyl phthalate (BBP)	N.D.	N.D.	N.D.	N.D.	N.D.	N.D.	N.D.	N.D.
Bis-(2-ethylhexyl)phthalate (DEHP)	N.D.	N.D.	N.D.	N.D.	N.D.	N.D.	N.D.	N.D.
Di-iso-butyl ortho-phthalate (DIBP)	N.D.	N.D.	N.D.	N.D.	N.D.	N.D.	N.D.	N.D.

Test Item	Result (%)							
	41	42	43	44	45	46	47	50
Dibutyl phthalate (DBP)	N.D.	N.D.	N.D.	N.D.	N.D.	N.D.	N.D.	N.D.
Butyl benzyl phthalate (BBP)	N.D.	N.D.	N.D.	N.D.	N.D.	N.D.	N.D.	N.D.
Bis-(2-ethylhexyl)phthalate (DEHP)	N.D.	N.D.	N.D.	N.D.	N.D.	N.D.	N.D.	N.D.
Di-iso-butyl ortho-phthalate (DIBP)	N.D.	N.D.	N.D.	N.D.	N.D.	N.D.	N.D.	N.D.

In no circumstances shall the Company's responsibility extend beyond inspection, testing and reporting upon the samples actually drawn from the bulk and inspected, tested and surveyed by the Company and any inference to be drawn from the results of such inspection or survey or testing shall be entirely in the discretion and at the sole and exclusive responsibility of the Principal. This test report cannot be reproduced except in full.

**FLION TESTING TECHNOLOGIES**

Add: Gangzi Industrial Park, Furong Industrial Area, Xinqiao Village, Shajing Town, Bao'an District, Shenzhen City

Tel : 86-0755-2724 8885

Fax : 86-0755-2746 0090

Http://www.cnfft.com



Test Item	Result (%)							
	56	58	63	66	67	68	70	72
Dibutyl phthalate (DBP)	N.D.	N.D.	N.D.	N.D.	N.D.	N.D.	N.D.	N.D.
Butyl benzyl phthalate (BBP)	N.D.	N.D.	N.D.	N.D.	N.D.	N.D.	N.D.	N.D.
Bis-(2-ethylhexyl)phthalate (DEHP)	N.D.	N.D.	N.D.	N.D.	N.D.	N.D.	N.D.	N.D.
Di-iso-butyl ortho-phthalate (DIBP)	N.D.	N.D.	N.D.	N.D.	N.D.	N.D.	N.D.	N.D.

Test Item	Result (%)							
	73	74	76	81	82	83	87	88
Dibutyl phthalate (DBP)	N.D.	N.D.	N.D.	N.D.	N.D.	N.D.	N.D.	N.D.
Butyl benzyl phthalate (BBP)	N.D.	N.D.	N.D.	N.D.	N.D.	N.D.	N.D.	N.D.
Bis-(2-ethylhexyl)phthalate (DEHP)	N.D.	N.D.	N.D.	N.D.	N.D.	N.D.	N.D.	N.D.
Di-iso-butyl ortho-phthalate (DIBP)	N.D.	N.D.	N.D.	N.D.	N.D.	N.D.	N.D.	N.D.

Test Item	Result (%)							
	89	90	91	92	93	94	96	97
Dibutyl phthalate (DBP)	N.D.	N.D.	N.D.	N.D.	N.D.	N.D.	N.D.	N.D.
Butyl benzyl phthalate (BBP)	N.D.	N.D.	N.D.	N.D.	N.D.	N.D.	N.D.	N.D.
Bis-(2-ethylhexyl)phthalate (DEHP)	N.D.	N.D.	N.D.	N.D.	N.D.	N.D.	N.D.	N.D.
Di-iso-butyl ortho-phthalate (DIBP)	N.D.	N.D.	N.D.	N.D.	N.D.	N.D.	N.D.	N.D.

In no circumstances shall the Company's responsibility extend beyond inspection, testing and reporting upon the samples actually drawn from the bulk and inspected, tested and surveyed by the Company and any inference to be drawn from the results of such inspection or survey or testing shall be entirely in the discretion and at the sole and exclusive responsibility of the Principal. This test report cannot be reproduced except in full.



Test Item	Result (%)							
	98	99	104	106	107	109	110	113
Dibutyl phthalate (DBP)	N.D.	N.D.	N.D.	N.D.	N.D.	N.D.	N.D.	N.D.
Butyl benzyl phthalate (BBP)	N.D.	N.D.	N.D.	N.D.	N.D.	N.D.	N.D.	N.D.
Bis-(2-ethylhexyl)phthalate (DEHP)	N.D.	N.D.	N.D.	N.D.	N.D.	N.D.	N.D.	N.D.
Di-iso-butyl ortho-phthalate (DIBP)	N.D.	N.D.	N.D.	N.D.	N.D.	N.D.	N.D.	N.D.

Test Item	Result (%)							
	114	116	118	121	124	125	126	127
Dibutyl phthalate (DBP)	N.D.	N.D.	N.D.	N.D.	N.D.	N.D.	N.D.	N.D.
Butyl benzyl phthalate (BBP)	N.D.	N.D.	N.D.	N.D.	N.D.	N.D.	N.D.	N.D.
Bis-(2-ethylhexyl)phthalate (DEHP)	N.D.	N.D.	N.D.	N.D.	N.D.	N.D.	N.D.	N.D.
Di-iso-butyl ortho-phthalate (DIBP)	N.D.	N.D.	N.D.	N.D.	N.D.	N.D.	N.D.	N.D.

Test Item	Result (%)							
	129	132	133	134	135	136	137	138
Dibutyl phthalate (DBP)	N.D.	N.D.	N.D.	N.D.	N.D.	N.D.	N.D.	N.D.
Butyl benzyl phthalate (BBP)	N.D.	N.D.	N.D.	N.D.	N.D.	N.D.	N.D.	N.D.
Bis-(2-ethylhexyl)phthalate (DEHP)	N.D.	N.D.	N.D.	N.D.	N.D.	N.D.	N.D.	N.D.
Di-iso-butyl ortho-phthalate (DIBP)	N.D.	N.D.	N.D.	N.D.	N.D.	N.D.	N.D.	N.D.

In no circumstances shall the Company's responsibility extend beyond inspection, testing and reporting upon the samples actually drawn from the bulk and inspected, tested and surveyed by the Company and any inference to be drawn from the results of such inspection or survey or testing shall be entirely in the discretion and at the sole and exclusive responsibility of the Principal. This test report cannot be reproduced except in full.

**FLION TESTING TECHNOLOGIES**

Add: Gangzi Industrial Park, Furong Industrial Area, Xinqiao Village, Shajing Town, Bao'an District, Shenzhen City

Tel : 86-0755-2724 8885

Fax : 86-0755-2746 0090

Http://www.cnfft.com



Test Item	Result (%)							
	139	140	141	142	156	157	158	159
Dibutyl phthalate (DBP)	N.D.	N.D.	N.D.	N.D.	N.D.	N.D.	N.D.	N.D.
Butyl benzyl phthalate (BBP)	N.D.	N.D.	N.D.	N.D.	N.D.	N.D.	N.D.	N.D.
Bis-(2-ethylhexyl)phthalate (DEHP)	N.D.	N.D.	N.D.	N.D.	N.D.	N.D.	N.D.	N.D.
Di-iso-butyl ortho-phthalate (DIBP)	N.D.	N.D.	N.D.	N.D.	N.D.	N.D.	N.D.	N.D.

**Remark:**

(a) It is the result on total Br while test item on restricted substances is PBBs/PBDEs. It is the result on total Cr while test item on restricted substances is Cr<sup>6+</sup>.

(b) Results are obtained by EDXRF for primary screening, and further chemical testing by ICP (for Cd, Pb, Hg), UV-VIS (for CrVI) and GC/MS (for PBBs, PBDEs) is recommended to be performed, if the concentration exceeds the below warning value according to IEC 62321-3-1: 2013 (Unit: mg/kg)

Element	Polymer	Metal	Composite Materials
Cd	$BL \leq (70-3\sigma) < X < (130+3\sigma) \leq OL$	$BL \leq (70-3\sigma) < X < (130+3\sigma) \leq OL$	$LOD < X < (150+3\sigma) \leq OL$
Pb	$BL \leq (700-3\sigma) < X < (1300+3\sigma) \leq OL$	$BL \leq (700-3\sigma) < X < (1300+3\sigma) \leq OL$	$BL \leq (500-3\sigma) < X < (1500+3\sigma) \leq OL$
Hg	$BL \leq (700-3\sigma) < X < (1300+3\sigma) \leq OL$	$BL \leq (700-3\sigma) < X < (1300+3\sigma) \leq OL$	$BL \leq (500-3\sigma) < X < (1500+3\sigma) \leq OL$
Br	$BL \leq (300-3\sigma) < X$	Not applicable	$BL \leq (250-3\sigma) < X$
Cr	$BL \leq (700-3\sigma) < X$	$BL \leq (700-3\sigma) < X$	$BL \leq (500-3\sigma) < X$

**RoHS Limit:**

Restricted Substances	Limit
Lead(Pb) content	0.1% (1000ppm)
Cadmium(Cd) content	0.01% (100ppm)
Mercury(Hg) content	0.1% (1000ppm)
Hexavalent Chromium(CrVI) content	0.1% (1000ppm)
Polybrominated Biphenyls (PBBs) content	0.1% (1000ppm)
Polybrominated Diphenyl Ethers (PBDEs) content	0.1% (1000ppm)

The limits were quoted from Annex II of 2011/65/EU for homogeneous material.

(c) BL = Below Limit, OL = Over Limit, IN = Inconclusive, LOD = Limit of Detection

(d) The XRF screening test for RoHS elements – The reading may be different to the actual content in the sample be of non-uniformity composition

(e) mg/kg = ppm = 0.0001%, N.D. = not detected (<MDL), --- = not conducted

(f) Unit and Method Detection Limit (MDL) in wet chemical test:

Test Items	Pb	Cd	Hg
Units	mg/kg	mg/kg	mg/kg
MDL	2	2	2

The MDL for single compound of PBBs & PBDEs is 5 mg/kg and MDL of Cr<sup>6+</sup> for polymer & composite sample is 2 mg/kg.

(g) According to IEC62321-7-2:2017, result on Cr<sup>6+</sup> for metal sample is shown as Positive/Negative.

Positive = Presence of Cr<sup>6+</sup> coating, Negative = Absence of Cr<sup>6+</sup> coating.

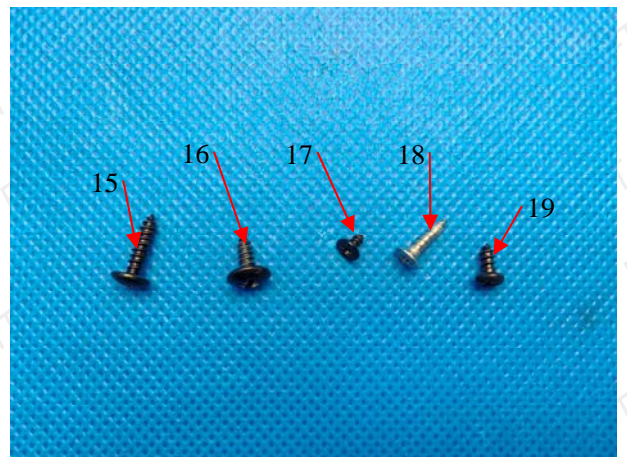
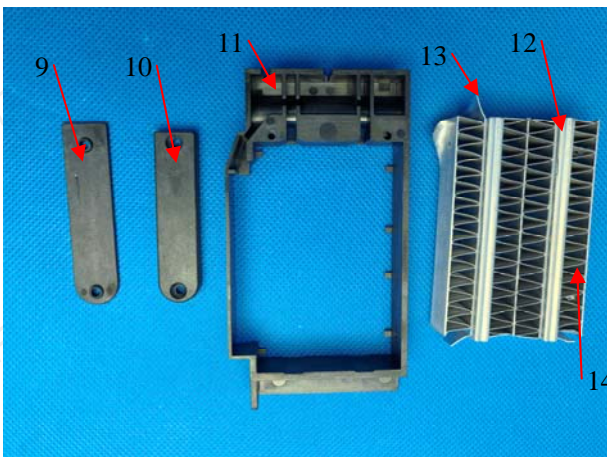
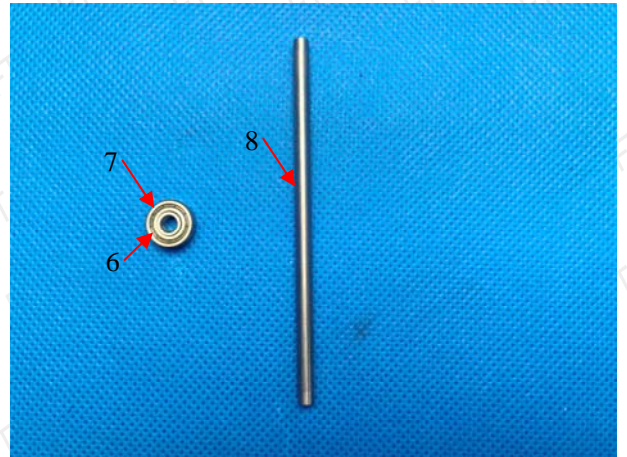
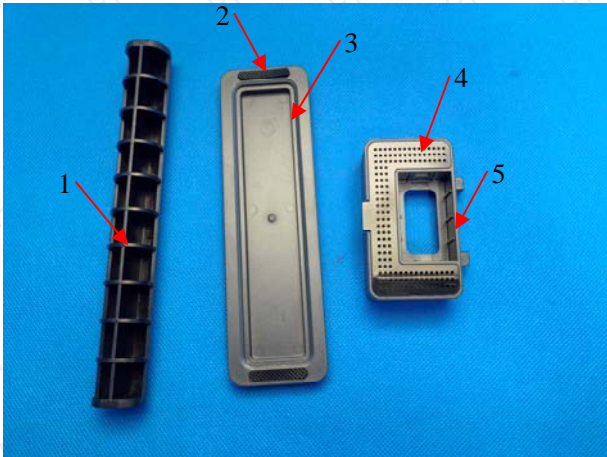
(h) “\*” (The result of No.151): According to the customer's statement, the sample is a ceramic. The result is an exemption under exemption Clause 7C-1 of RoHS Directive 2011/65/EU.

**Remark:** The above result(s) was/were only given as the informality value and only for reference

In no circumstances shall the Company's responsibility extend beyond inspection, testing and reporting upon the samples actually drawn from the bulk and inspected, tested and surveyed by the Company and any inference to be drawn from the results of such inspection or survey or testing shall be entirely in the discretion and at the sole and exclusive responsibility of the Principal. This test report cannot be reproduced except in full.



## Sample photo



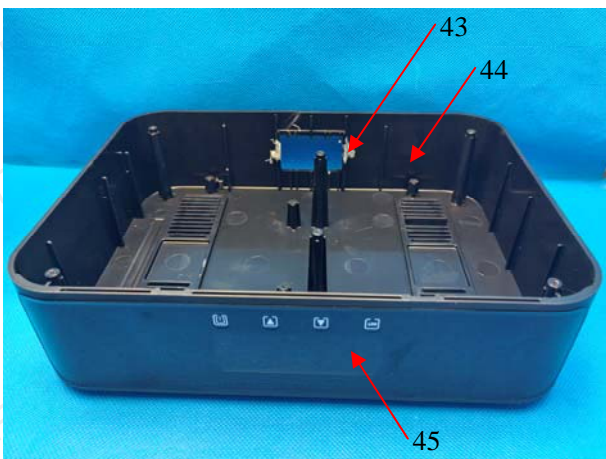
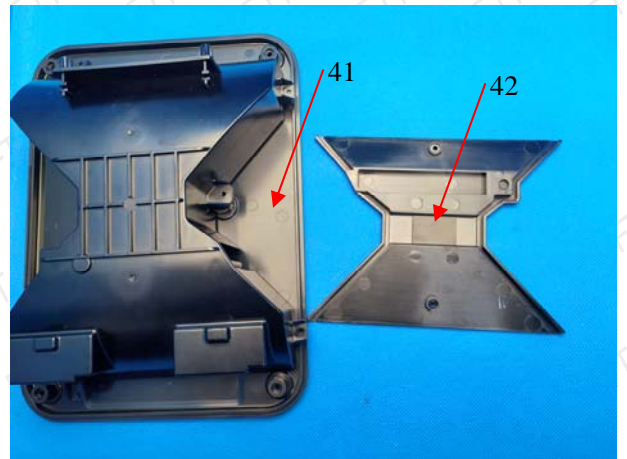
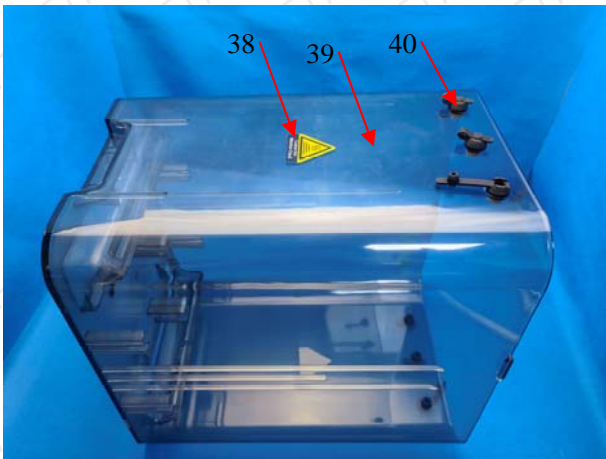
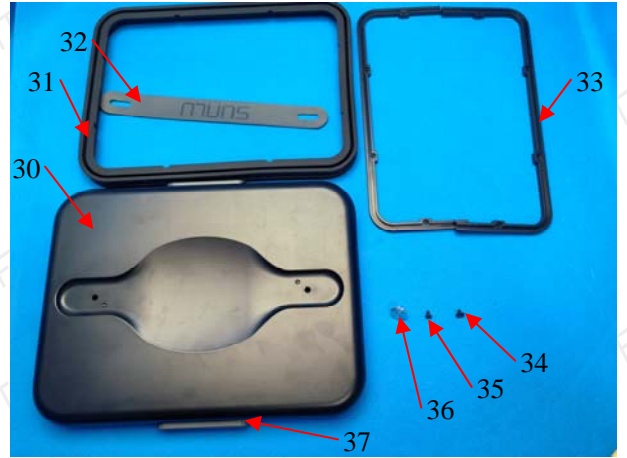
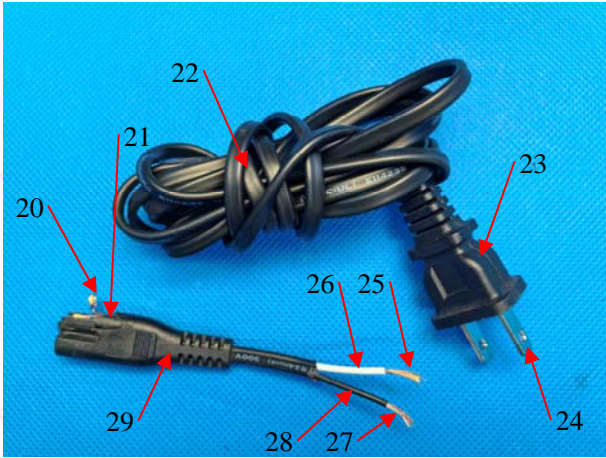
In no circumstances shall the Company's responsibility extend beyond inspection, testing and reporting upon the samples actually drawn from the bulk and inspected, tested and surveyed by the Company and any inference to be drawn from the results of such inspection or survey or testing shall be entirely in the discretion and at the sole and exclusive responsibility of the Principal. This test report cannot be reproduced except in full.

**FLION TESTING TECHNOLOGIES**

Add: Gangzi Industrial Park, Furong Industrial Area, Xinqiao Village, Shajing Town, Bao'an District, Shenzhen City

Tel : 86-0755-2724 8885 Fax : 86-0755-2746 0090 Http://www.cnftt.com





In no circumstances shall the Company's responsibility extend beyond inspection, testing and reporting upon the samples actually drawn from the bulk and inspected, tested and surveyed by the Company and any inference to be drawn from the results of such inspection or survey or testing shall be entirely in the discretion and at the sole and exclusive responsibility of the Principal. This test report cannot be reproduced except in full.

**FLION TESTING TECHNOLOGIES**

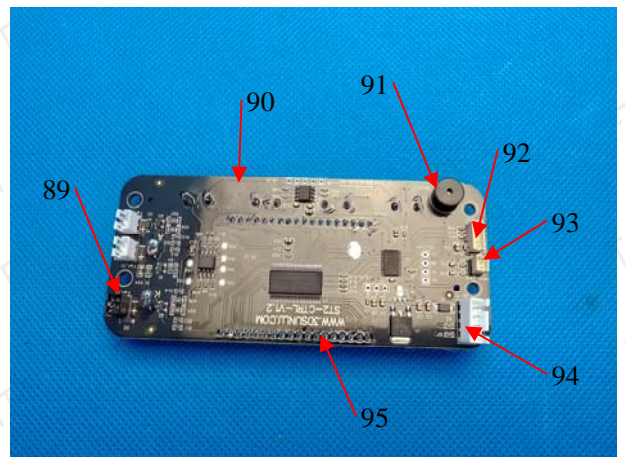
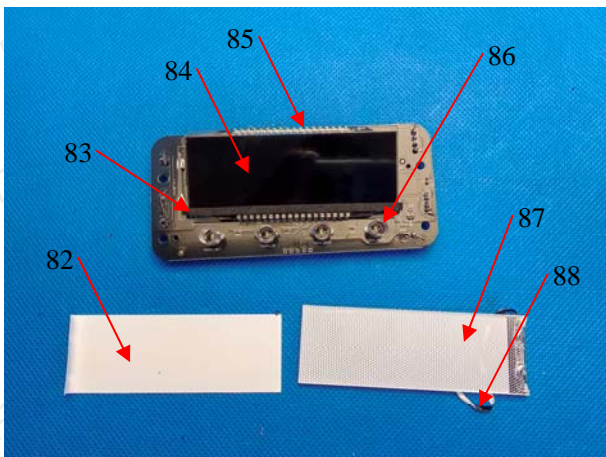
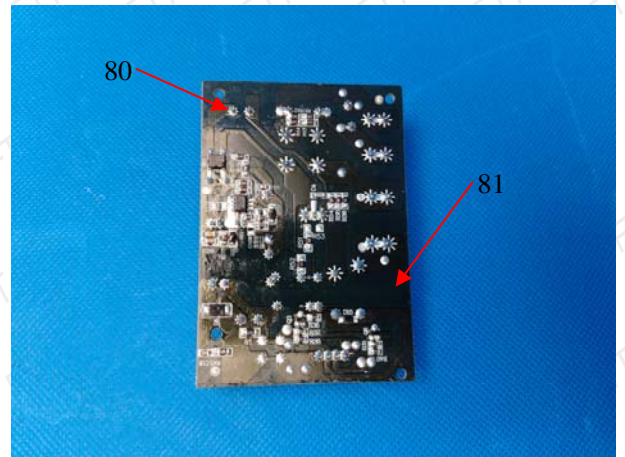
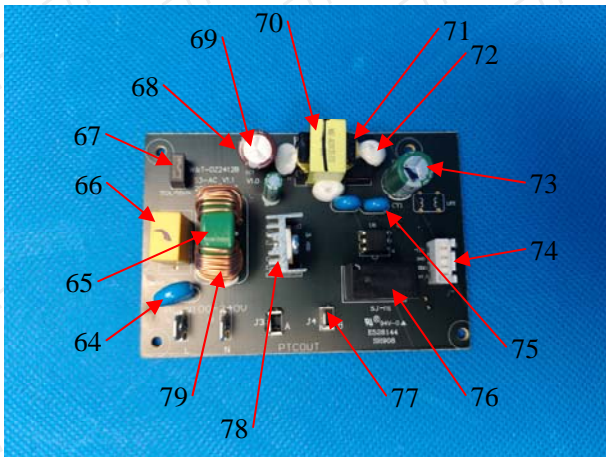
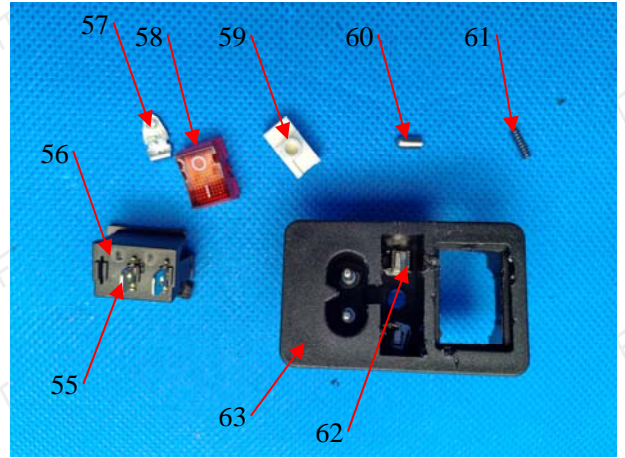
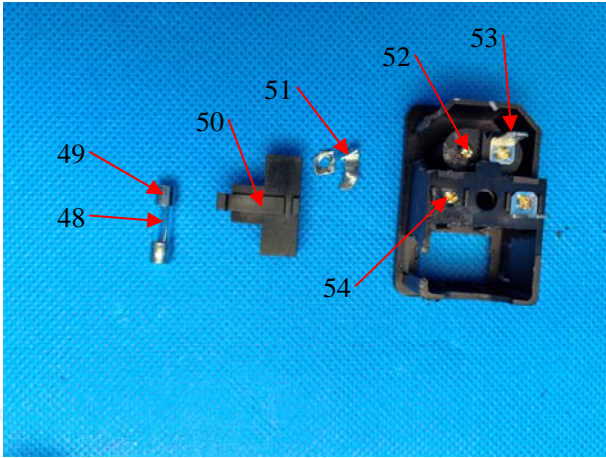
Add: Gangzi Industrial Park, Furong Industrial Area, Xinqiao Village, Shajing Town, Bao'an District, Shenzhen City

Tel : 86-0755-2724 8885

Fax : 86-0755-2746 0090

Http://www.cnfft.com





In no circumstances shall the Company's responsibility extend beyond inspection, testing and reporting upon the samples actually drawn from the bulk and inspected, tested and surveyed by the Company and any inference to be drawn from the results of such inspection or survey or testing shall be entirely in the discretion and at the sole and exclusive responsibility of the Principal. This test report cannot be reproduced except in full.

**FLION TESTING TECHNOLOGIES**

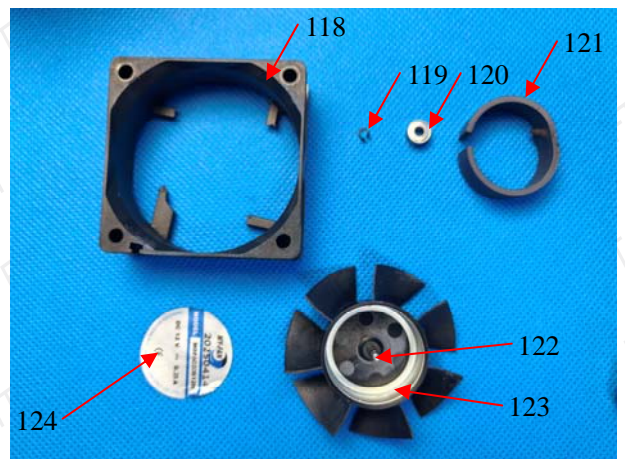
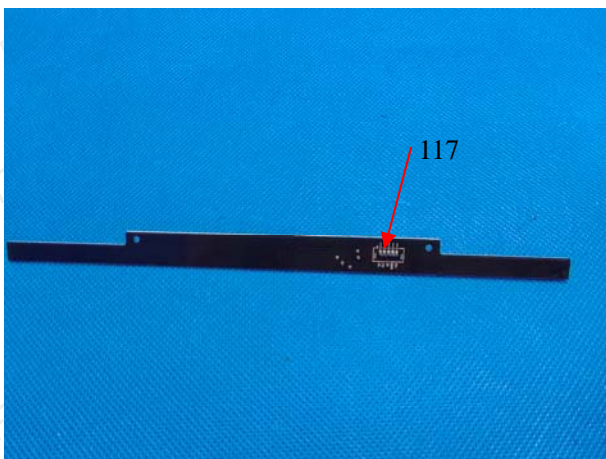
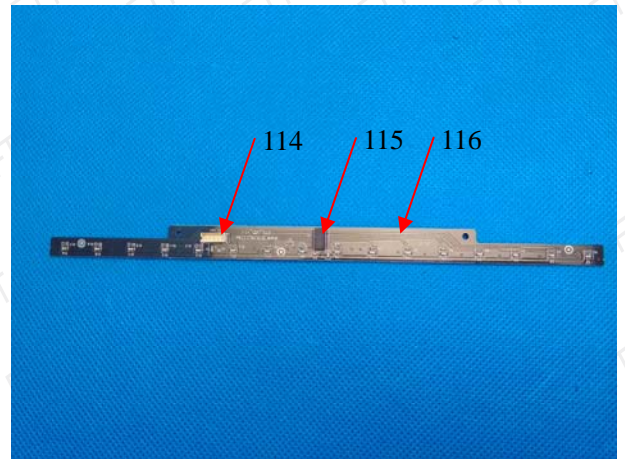
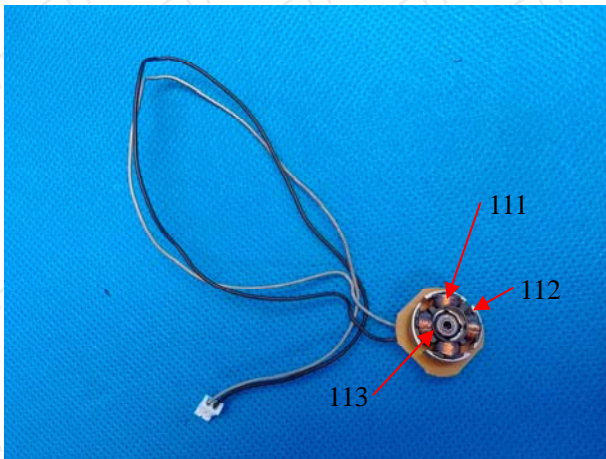
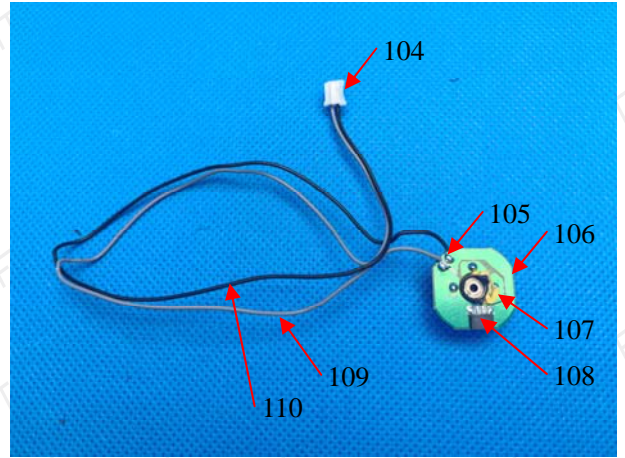
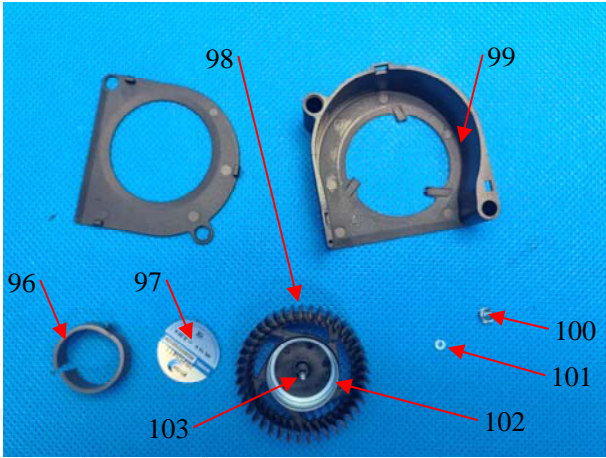
Add: Gangzi Industrial Park, Furong Industrial Area, Xinqiao Village, Shajing Town, Bao'an District, Shenzhen City

Tel : 86-0755-2724 8885

Fax : 86-0755-2746 0090

Http://www.cnfft.com





In no circumstances shall the Company's responsibility extend beyond inspection, testing and reporting upon the samples actually drawn from the bulk and inspected, tested and surveyed by the Company and any inference to be drawn from the results of such inspection or survey or testing shall be entirely in the discretion and at the sole and exclusive responsibility of the Principal. This test report cannot be reproduced except in full.

**FLION TESTING TECHNOLOGIES**

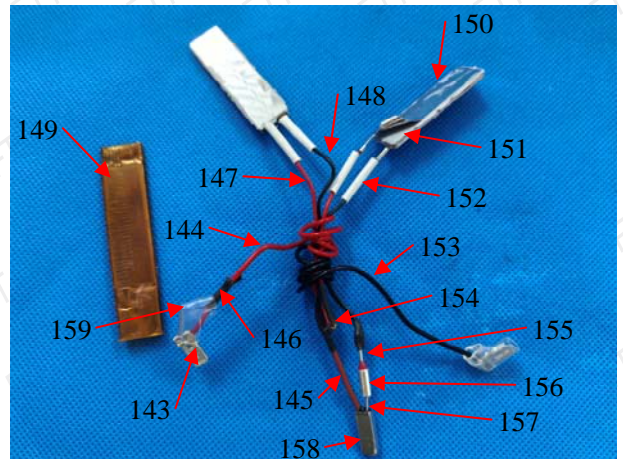
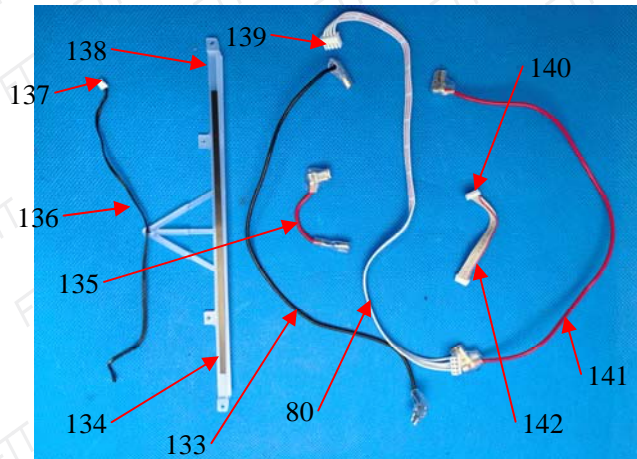
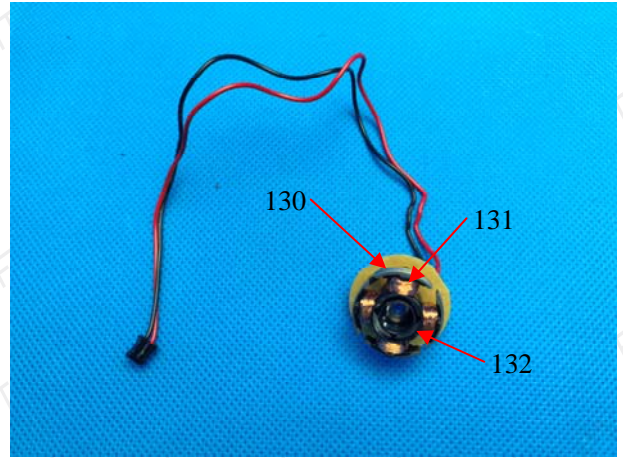
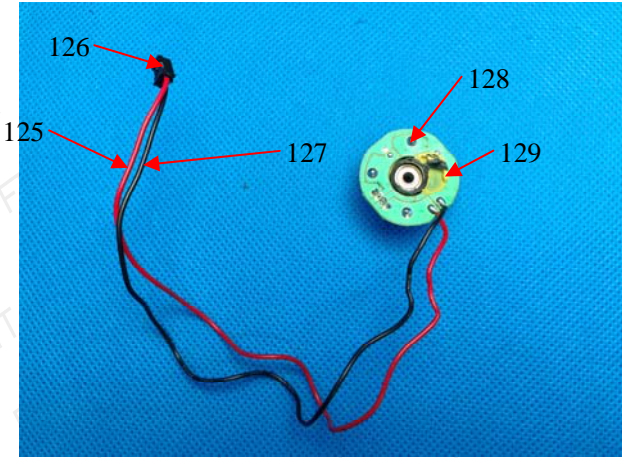
Add: Gangzi Industrial Park, Furong Industrial Area, Xinqiao Village, Shajing Town, Bao'an District, Shenzhen City

Tel : 86-0755-2724 8885

Fax : 86-0755-2746 0090

Http://www.cnfft.com





Note: The results shown in this report refer only to the sample(s) tested.

\*\*\*\*\* End of Report \*\*\*\*\*

In no circumstances shall the Company's responsibility extend beyond inspection, testing and reporting upon the samples actually drawn from the bulk and inspected, tested and surveyed by the Company and any inference to be drawn from the results of such inspection or survey or testing shall be entirely in the discretion and at the sole and exclusive responsibility of the Principal. This test report cannot be reproduced except in full.

