

Report No.: HLF25009040E

Date: Sep 9, 2025

Page 1 of 20

Applicant : Sunlu (Guangdong) Technology Co., Ltd.

Address : No. 162 Tanlong North Road, Tanzhou Town, Zhongshan City Zhongshan, Guangdong, 528467, China

The following sample(s) was/were submitted and identified on behalf of the client as:

Sample Name : 3D Printing-mate (110V Version)

Sample Model : AMS heater

Sample Received Date : Sep 3, 2025

Test Completed Date : Sep 9, 2025

Test Method : 1, Screening test method: IEC62321-3-1:2013/XRF
 2, Wet chemical test method:
 Lead(Pb): IEC62321-5:2013/ICP-OES
 Cadmium(Cd): IEC62321-5:2013/ICP-OES
 Mercury(Hg): IEC62321-4:2013+A1:2017/ICP-OES
 Hexavalent Chromium(CrVI): IEC62321-7-1:2015/UV-VIS and IEC62321-7-2:2017/UV-VIS
 Polybrominated Biphenyls (PBBs): IEC62321-6:2015 /GC-MS
 Polybrominated Biphenyl Ethers(PBDEs): IEC62321-6:2015 /GC-MS
 3, Phthalates test method: IEC 62321-8:2017 / GC-MS

Test Results : Refer to the next page(s).

Test Requested	Conclusion
RoHS Directive (EU)2015/863 amending Annex II to Directive 2011/65/EU—Lead(Pb), Cadmium(Cd), Mercury(Hg), Hexavalent Chromium(CrVI), Polybrominated Biphenyls (PBBs), Polybrominated Biphenyl Ethers(PBDEs), Dibutyl phthalate (DBP), Butyl benzyl phthalate(BBP), Bis-(2-ethylhexyl)phthalate(DEHP), Di-iso-butyl ortho-phthalate(DIBP)	PASS

scan to check the report



HLF25009040E

Authorized Signature:

Technology Manager

In no circumstances shall the Company's responsibility extend beyond inspection, testing and reporting upon the samples actually drawn from the bulk and inspected, tested and surveyed by the Company and any inference to be drawn from the results of such inspection or survey or testing shall be entirely in the discretion and at the sole and exclusive responsibility of the Principal. This test report cannot be reproduced except in full.

FLION TESTING TECHNOLOGIES

Add: Gangzi Industrial Park, Furong Industrial Area, Xinqiao Village, Shajing Town, Bao'an District, Shenzhen City

Tel : 86-0755-2724 8885

Fax : 86-0755-2746 0090

Http://www.cnfft.com



Test Results:

Part No.	Results	Cd	Pb	Hg	Cr ⁶⁺	PBBs	PBDEs	Conclusion on RoHS
1	EDXRF	BL	BL	BL	IN	--	--	--
	Wet Chemical Testing	--	--	--	N.D.	--	--	Comply
2	EDXRF	BL	BL	BL	BL	BL	BL	--
	Wet Chemical Testing	--	--	--	--	--	--	Comply
3	EDXRF	BL	BL	BL	BL	BL	BL	--
	Wet Chemical Testing	--	--	--	--	--	--	Comply
4	EDXRF	BL	BL	BL	BL	BL	BL	--
	Wet Chemical Testing	--	--	--	--	--	--	Comply
5	EDXRF	BL	BL	BL	BL	BL	BL	--
	Wet Chemical Testing	--	--	--	--	--	--	Comply
6	EDXRF	BL	IN	BL	BL	--	--	--
	Wet Chemical Testing	--	N.D.	--	--	--	--	Comply
7	EDXRF	BL	BL	BL	BL	BL	BL	--
	Wet Chemical Testing	--	--	--	--	--	--	Comply
8	EDXRF	BL	BL	BL	BL	--	--	--
	Wet Chemical Testing	--	--	--	--	--	--	Comply
9	EDXRF	BL	BL	BL	BL	--	--	--
	Wet Chemical Testing	--	--	--	--	--	--	Comply
10	EDXRF	BL	BL	BL	BL	BL	BL	--
	Wet Chemical Testing	--	--	--	--	--	--	Comply
11	EDXRF	BL	BL	BL	BL	BL	BL	--
	Wet Chemical Testing	--	--	--	--	--	--	Comply
12	EDXRF	BL	BL	BL	BL	BL	BL	--
	Wet Chemical Testing	--	--	--	--	--	--	Comply
13	EDXRF	BL	BL	BL	BL	--	--	--
	Wet Chemical Testing	--	--	--	--	--	--	Comply
14	EDXRF	BL	BL	BL	BL	IN	IN	--
	Wet Chemical Testing	--	--	--	--	N.D.	N.D.	Comply

In no circumstances shall the Company's responsibility extend beyond inspection, testing and reporting upon the samples actually drawn from the bulk and inspected, tested and surveyed by the Company and any inference to be drawn from the results of such inspection or survey or testing shall be entirely in the discretion and at the sole and exclusive responsibility of the Principal. This test report cannot be reproduced except in full.

FLION TESTING TECHNOLOGIES

Add: Gangzi Industrial Park, Furong Industrial Area, Xinqiao Village, Shajing Town, Bao'an District, Shenzhen City

Tel : 86-0755-2724 8885 Fax : 86-0755-2746 0090 Http://www.cnfft.com



Part No.	Results	Cd	Pb	Hg	Cr ⁶⁺	PBBs	PBDEs	Conclusion on RoHS
15	EDXRF	BL	BL	BL	BL	--	--	--
	Wet Chemical Testing	--	--	--	--	--	--	Comply
16	EDXRF	BL	BL	BL	IN	--	--	--
	Wet Chemical Testing	--	--	--	N.D.	--	--	Comply
17	EDXRF	BL	BL	BL	IN	BL	BL	--
	Wet Chemical Testing	--	--	--	N.D.	--	--	Comply
18	EDXRF	BL	BL	BL	IN	--	--	--
	Wet Chemical Testing	--	--	--	N.D.	--	--	Comply
19	EDXRF	BL	BL	BL	BL	BL	BL	--
	Wet Chemical Testing	--	--	--	--	--	--	Comply
20	EDXRF	BL	BL	BL	BL	--	--	--
	Wet Chemical Testing	--	--	--	--	--	--	Comply
21	EDXRF	BL	BL	BL	BL	BL	BL	--
	Wet Chemical Testing	--	--	--	--	--	--	Comply
22	EDXRF	BL	BL	BL	BL	BL	BL	--
	Wet Chemical Testing	--	--	--	--	--	--	Comply
23	EDXRF	BL	BL	BL	BL	BL	BL	--
	Wet Chemical Testing	--	--	--	--	--	--	Comply
24	EDXRF	BL	BL	BL	BL	BL	BL	--
	Wet Chemical Testing	--	--	--	--	--	--	Comply
25	EDXRF	BL	BL	BL	BL	IN	IN	--
	Wet Chemical Testing	--	--	--	--	N.D.	N.D.	Comply
26	EDXRF	BL	BL	BL	BL	--	--	--
	Wet Chemical Testing	--	--	--	--	--	--	Comply
27	EDXRF	BL	BL	BL	BL	BL	BL	--
	Wet Chemical Testing	--	--	--	--	--	--	Comply
28	EDXRF	BL	BL	BL	BL	--	--	--
	Wet Chemical Testing	--	--	--	--	--	--	Comply

In no circumstances shall the Company's responsibility extend beyond inspection, testing and reporting upon the samples actually drawn from the bulk and inspected, tested and surveyed by the Company and any inference to be drawn from the results of such inspection or survey or testing shall be entirely in the discretion and at the sole and exclusive responsibility of the Principal. This test report cannot be reproduced except in full.

FLION TESTING TECHNOLOGIES

Add: Gangzi Industrial Park, Furong Industrial Area, Xinqiao Village, Shajing Town, Bao'an District, Shenzhen City

Tel : 86-0755-2724 8885

Fax : 86-0755-2746 0090

Http://www.cnfft.com



Part No.	Results	Cd	Pb	Hg	Cr ⁶⁺	PBBs	PBDEs	Conclusion on RoHS
29	EDXRF	BL	BL	BL	BL	BL	BL	--
	Wet Chemical Testing	--	--	--	--	--	--	Comply
30	EDXRF	BL	BL	BL	BL	--	--	--
	Wet Chemical Testing	--	--	--	--	--	--	Comply
31	EDXRF	BL	BL	BL	BL	BL	BL	--
	Wet Chemical Testing	--	--	--	--	--	--	Comply
32	EDXRF	BL	BL	BL	BL	BL	BL	--
	Wet Chemical Testing	--	--	--	--	--	--	Comply
33	EDXRF	BL	BL	BL	BL	BL	BL	--
	Wet Chemical Testing	--	--	--	--	--	--	Comply
34	EDXRF	BL	BL	BL	BL	BL	BL	--
	Wet Chemical Testing	--	--	--	--	--	--	Comply
35	EDXRF	BL	BL	BL	BL	--	--	--
	Wet Chemical Testing	--	--	--	--	--	--	Comply
36	EDXRF	BL	BL	BL	BL	BL	BL	--
	Wet Chemical Testing	--	--	--	--	--	--	Comply
37	EDXRF	BL	BL	BL	BL	BL	BL	--
	Wet Chemical Testing	--	--	--	--	--	--	Comply
38	EDXRF	BL	BL	BL	BL	BL	BL	--
	Wet Chemical Testing	--	--	--	--	--	--	Comply
39	EDXRF	BL	BL	BL	BL	BL	BL	--
	Wet Chemical Testing	--	--	--	--	--	--	Comply
40	EDXRF	BL	BL	BL	IN	--	--	--
	Wet Chemical Testing	--	--	--	N.D.	--	--	Comply
41	EDXRF	BL	BL	BL	IN	--	--	--
	Wet Chemical Testing	--	--	--	N.D.	--	--	Comply
42	EDXRF	BL	BL	BL	BL	BL	BL	--
	Wet Chemical Testing	--	--	--	--	--	--	Comply

In no circumstances shall the Company's responsibility extend beyond inspection, testing and reporting upon the samples actually drawn from the bulk and inspected, tested and surveyed by the Company and any inference to be drawn from the results of such inspection or survey or testing shall be entirely in the discretion and at the sole and exclusive responsibility of the Principal. This test report cannot be reproduced except in full.

FLION TESTING TECHNOLOGIES

Add: Gangzi Industrial Park, Furong Industrial Area, Xinqiao Village, Shajing Town, Bao'an District, Shenzhen City

Tel : 86-0755-2724 8885

Fax : 86-0755-2746 0090

Http://www.cnfft.com



Part No.	Results	Cd	Pb	Hg	Cr ⁶⁺	PBBs	PBDEs	Conclusion on RoHS
43	EDXRF	BL	BL	BL	BL	--	--	--
	Wet Chemical Testing	--	--	--	--	--	--	Comply
44	EDXRF	BL	BL	BL	BL	IN	IN	--
	Wet Chemical Testing	--	--	--	--	N.D.	N.D.	Comply
45	EDXRF	BL	BL	BL	BL	IN	IN	--
	Wet Chemical Testing	--	--	--	--	N.D.	N.D.	Comply
46	EDXRF	BL	BL	BL	BL	--	--	--
	Wet Chemical Testing	--	--	--	--	--	--	Comply
47	EDXRF	BL	BL	BL	BL	IN	IN	--
	Wet Chemical Testing	--	--	--	--	N.D.	N.D.	Comply
48	EDXRF	BL	BL	BL	BL	--	--	--
	Wet Chemical Testing	--	--	--	--	--	--	Comply
49	EDXRF	BL	BL	BL	BL	--	--	--
	Wet Chemical Testing	--	--	--	--	--	--	Comply
50	EDXRF	BL	BL	BL	BL	BL	BL	--
	Wet Chemical Testing	--	--	--	--	--	--	Comply
51	EDXRF	BL	BL	BL	BL	BL	BL	--
	Wet Chemical Testing	--	--	--	--	--	--	Comply
52	EDXRF	BL	BL	BL	BL	BL	BL	--
	Wet Chemical Testing	--	--	--	--	--	--	Comply
53	EDXRF	BL	BL	BL	BL	--	--	--
	Wet Chemical Testing	--	--	--	--	--	--	Comply
54	EDXRF	BL	BL	BL	BL	--	--	--
	Wet Chemical Testing	--	--	--	--	--	--	Comply
55	EDXRF	BL	BL	BL	BL	BL	BL	--
	Wet Chemical Testing	--	--	--	--	--	--	Comply
56	EDXRF	BL	BL	BL	BL	--	--	--
	Wet Chemical Testing	--	--	--	--	--	--	Comply

In no circumstances shall the Company's responsibility extend beyond inspection, testing and reporting upon the samples actually drawn from the bulk and inspected, tested and surveyed by the Company and any inference to be drawn from the results of such inspection or survey or testing shall be entirely in the discretion and at the sole and exclusive responsibility of the Principal. This test report cannot be reproduced except in full.

FLION TESTING TECHNOLOGIES

Add: Gangzi Industrial Park, Furong Industrial Area, Xinqiao Village, Shajing Town, Bao'an District, Shenzhen City

Tel : 86-0755-2724 8885 Fax : 86-0755-2746 0090 Http://www.cnfft.com



Part No.	Results	Cd	Pb	Hg	Cr ⁶⁺	PBBs	PBDEs	Conclusion on RoHS
57	EDXRF	BL	BL	BL	BL	BL	BL	--
	Wet Chemical Testing	--	--	--	--	--	--	Comply
58	EDXRF	BL	BL	BL	BL	BL	BL	--
	Wet Chemical Testing	--	--	--	--	--	--	Comply
59	EDXRF	BL	BL	BL	BL	BL	BL	--
	Wet Chemical Testing	--	--	--	--	--	--	Comply
60	EDXRF	BL	BL	BL	BL	BL	BL	--
	Wet Chemical Testing	--	--	--	--	--	--	Comply
61	EDXRF	BL	BL	BL	BL	BL	BL	--
	Wet Chemical Testing	--	--	--	--	--	--	Comply
62	EDXRF	BL	BL	BL	BL	--	--	--
	Wet Chemical Testing	--	--	--	--	--	--	Comply
63	EDXRF	BL	BL	BL	BL	BL	BL	--
	Wet Chemical Testing	--	--	--	--	--	--	Comply
64	EDXRF	BL	BL	BL	BL	BL	BL	--
	Wet Chemical Testing	--	--	--	--	--	--	Comply
65	EDXRF	BL	BL	BL	BL	BL	BL	--
	Wet Chemical Testing	--	--	--	--	--	--	Comply
66	EDXRF	BL	BL	BL	BL	BL	BL	--
	Wet Chemical Testing	--	--	--	--	--	--	Comply
67	EDXRF	BL	BL	BL	IN	--	--	--
	Wet Chemical Testing	--	--	--	N.D.	--	--	Comply
68	EDXRF	BL	BL	BL	BL	BL	BL	--
	Wet Chemical Testing	--	--	--	--	--	--	Comply
69	EDXRF	BL	BL	BL	IN	--	--	--
	Wet Chemical Testing	--	--	--	N.D.	--	--	Comply
70	EDXRF	BL	BL	BL	BL	--	--	--
	Wet Chemical Testing	--	--	--	--	--	--	Comply

In no circumstances shall the Company's responsibility extend beyond inspection, testing and reporting upon the samples actually drawn from the bulk and inspected, tested and surveyed by the Company and any inference to be drawn from the results of such inspection or survey or testing shall be entirely in the discretion and at the sole and exclusive responsibility of the Principal. This test report cannot be reproduced except in full.

FLION TESTING TECHNOLOGIES

Add: Gangzi Industrial Park, Furong Industrial Area, Xinqiao Village, Shajing Town, Bao'an District, Shenzhen City

Tel : 86-0755-2724 8885

Fax : 86-0755-2746 0090

Http://www.cnfft.com



Part No.	Results	Cd	Pb	Hg	Cr ⁶⁺	PBBs	PBDEs	Conclusion on RoHS
71	EDXRF	BL	BL	BL	BL	BL	BL	--
	Wet Chemical Testing	--	--	--	--	--	--	Comply
72	EDXRF	BL	BL	BL	BL	BL	BL	--
	Wet Chemical Testing	--	--	--	--	--	--	Comply
73	EDXRF	BL	BL	BL	IN	--	--	--
	Wet Chemical Testing	--	--	--	N.D.	--	--	Comply
74	EDXRF	BL	BL	BL	BL	--	--	--
	Wet Chemical Testing	--	--	--	--	--	--	Comply
75	EDXRF	BL	BL	BL	BL	IN	IN	--
	Wet Chemical Testing	--	--	--	--	N.D.	N.D.	Comply
76	EDXRF	BL	BL	BL	BL	BL	BL	--
	Wet Chemical Testing	--	--	--	--	--	--	Comply
77	EDXRF	BL	BL	BL	BL	BL	BL	--
	Wet Chemical Testing	--	--	--	--	--	--	Comply
78	EDXRF	BL	BL	BL	BL	BL	BL	--
	Wet Chemical Testing	--	--	--	--	--	--	Comply
79	EDXRF	BL	BL	BL	BL	BL	BL	--
	Wet Chemical Testing	--	--	--	--	--	--	Comply
80	EDXRF	BL	BL	BL	BL	BL	BL	--
	Wet Chemical Testing	--	--	--	--	--	--	Comply
81	EDXRF	BL	BL	BL	BL	IN	IN	--
	Wet Chemical Testing	--	--	--	--	N.D.	N.D.	Comply
82	EDXRF	BL	BL	BL	BL	IN	IN	--
	Wet Chemical Testing	--	--	--	--	N.D.	N.D.	Comply
83	EDXRF	BL	BL	BL	BL	BL	BL	--
	Wet Chemical Testing	--	--	--	--	--	--	Comply
84	EDXRF	BL	BL	BL	BL	BL	BL	--
	Wet Chemical Testing	--	--	--	--	--	--	Comply

In no circumstances shall the Company's responsibility extend beyond inspection, testing and reporting upon the samples actually drawn from the bulk and inspected, tested and surveyed by the Company and any inference to be drawn from the results of such inspection or survey or testing shall be entirely in the discretion and at the sole and exclusive responsibility of the Principal. This test report cannot be reproduced except in full.

FLION TESTING TECHNOLOGIES

Add: Gangzi Industrial Park, Furong Industrial Area, Xinqiao Village, Shajing Town, Bao'an District, Shenzhen City

Tel : 86-0755-2724 8885

Fax : 86-0755-2746 0090

Http://www.cnfft.com



Part No.	Results	Cd	Pb	Hg	Cr ⁶⁺	PBBs	PBDEs	Conclusion on RoHS
85	EDXRF	BL	BL	BL	BL	--	--	--
	Wet Chemical Testing	--	--	--	--	--	--	Comply
86	EDXRF	BL	BL	BL	BL	BL	BL	--
	Wet Chemical Testing	--	--	--	--	--	--	Comply
87	EDXRF	BL	BL	BL	BL	BL	BL	--
	Wet Chemical Testing	--	--	--	--	--	--	Comply
88	EDXRF	BL	BL	BL	BL	--	--	--
	Wet Chemical Testing	--	--	--	--	--	--	Comply
89	EDXRF	BL	BL	BL	BL	BL	BL	--
	Wet Chemical Testing	--	--	--	--	--	--	Comply
90	EDXRF	BL	BL	BL	BL	IN	IN	--
	Wet Chemical Testing	--	--	--	--	N.D.	N.D.	Comply
91	EDXRF	BL	BL	BL	BL	BL	BL	--
	Wet Chemical Testing	--	--	--	--	--	--	Comply
92	EDXRF	BL	BL	BL	BL	BL	BL	--
	Wet Chemical Testing	--	--	--	--	--	--	Comply
93	EDXRF	BL	BL	BL	BL	IN	IN	--
	Wet Chemical Testing	--	--	--	--	N.D.	N.D.	Comply
94	EDXRF	BL	BL	BL	BL	BL	BL	--
	Wet Chemical Testing	--	--	--	--	--	--	Comply
95	EDXRF	BL	BL	BL	IN	--	--	--
	Wet Chemical Testing	--	--	--	N.D.	--	--	Comply
96	EDXRF	BL	BL	BL	IN	--	--	--
	Wet Chemical Testing	--	--	--	N.D.	--	--	Comply
97	EDXRF	BL	BL	BL	BL	BL	BL	--
	Wet Chemical Testing	--	--	--	--	--	--	Comply
98	EDXRF	BL	BL	BL	IN	--	--	--
	Wet Chemical Testing	--	--	--	N.D.	--	--	Comply

In no circumstances shall the Company's responsibility extend beyond inspection, testing and reporting upon the samples actually drawn from the bulk and inspected, tested and surveyed by the Company and any inference to be drawn from the results of such inspection or survey or testing shall be entirely in the discretion and at the sole and exclusive responsibility of the Principal. This test report cannot be reproduced except in full.

FLION TESTING TECHNOLOGIES

Add: Gangzi Industrial Park, Furong Industrial Area, Xinqiao Village, Shajing Town, Bao'an District, Shenzhen City



Part No.	Results	Cd	Pb	Hg	Cr ⁶⁺	PBBs	PBDEs	Conclusion on RoHS
99	EDXRF	BL	BL	BL	BL	BL	BL	--
	Wet Chemical Testing	--	--	--	--	--	--	Comply
100	EDXRF	BL	BL	BL	IN	--	--	--
	Wet Chemical Testing	--	--	--	N.D.	--	--	Comply
101	EDXRF	BL	BL	BL	IN	--	--	--
	Wet Chemical Testing	--	--	--	N.D.	--	--	Comply
102	EDXRF	BL	BL	BL	IN	--	--	--
	Wet Chemical Testing	--	--	--	N.D.	--	--	Comply
103	EDXRF	BL	BL	BL	IN	--	--	--
	Wet Chemical Testing	--	--	--	N.D.	--	--	Comply
104	EDXRF	BL	BL	BL	IN	--	--	--
	Wet Chemical Testing	--	--	--	N.D.	--	--	Comply
105	EDXRF	BL	BL	BL	BL	BL	BL	--
	Wet Chemical Testing	--	--	--	--	--	--	Comply
106	EDXRF	BL	BL	BL	BL	BL	BL	--
	Wet Chemical Testing	--	--	--	--	--	--	Comply
107	EDXRF	BL	BL	BL	BL	BL	BL	--
	Wet Chemical Testing	--	--	--	--	--	--	Comply
108	EDXRF	BL	BL	BL	BL	BL	BL	--
	Wet Chemical Testing	--	--	--	--	--	--	Comply
109	EDXRF	BL	BL	BL	BL	IN	IN	--
	Wet Chemical Testing	--	--	--	--	N.D.	N.D.	Comply
110	EDXRF	BL	BL	BL	BL	--	--	--
	Wet Chemical Testing	--	--	--	--	--	--	Comply
111	EDXRF	BL	BL	BL	BL	BL	BL	--
	Wet Chemical Testing	--	--	--	--	--	--	Comply
112	EDXRF	BL	BL	BL	BL	BL	BL	--
	Wet Chemical Testing	--	--	--	--	--	--	Comply

In no circumstances shall the Company's responsibility extend beyond inspection, testing and reporting upon the samples actually drawn from the bulk and inspected, tested and surveyed by the Company and any inference to be drawn from the results of such inspection or survey or testing shall be entirely in the discretion and at the sole and exclusive responsibility of the Principal. This test report cannot be reproduced except in full.

FLION TESTING TECHNOLOGIES

Add: Gangzi Industrial Park, Furong Industrial Area, Xinqiao Village, Shajing Town, Bao'an District, Shenzhen City

Tel : 86-0755-2724 8885

Fax : 86-0755-2746 0090

Http://www.cnfft.com



Part No.	Results	Cd	Pb	Hg	Cr ⁶⁺	PBBs	PBDEs	Conclusion on RoHS
113	EDXRF	BL	BL	BL	BL	--	--	--
	Wet Chemical Testing	--	--	--	--	--	--	Comply
114	EDXRF	BL	BL	BL	BL	--	--	--
	Wet Chemical Testing	--	--	--	--	--	--	Comply
115	EDXRF	BL	BL	BL	BL	IN	IN	--
	Wet Chemical Testing	--	--	--	--	N.D.	N.D.	Comply
116	EDXRF	BL	BL	BL	IN	--	--	--
	Wet Chemical Testing	--	--	--	N.D.	--	--	Comply
117	EDXRF	BL	BL	BL	BL	IN	IN	--
	Wet Chemical Testing	--	--	--	--	N.D.	N.D.	Comply
118	EDXRF	BL	BL	BL	BL	BL	BL	--
	Wet Chemical Testing	--	--	--	--	--	--	Comply
119	EDXRF	BL	BL	BL	IN	--	--	--
	Wet Chemical Testing	--	--	--	N.D.	--	--	Comply
120	EDXRF	BL	BL	BL	IN	--	--	--
	Wet Chemical Testing	--	--	--	N.D.	--	--	Comply
121	EDXRF	BL	BL	BL	BL	BL	BL	--
	Wet Chemical Testing	--	--	--	--	--	--	Comply
122	EDXRF	BL	BL	BL	BL	BL	BL	--
	Wet Chemical Testing	--	--	--	--	--	--	Comply
123	EDXRF	BL	BL	BL	BL	IN	IN	--
	Wet Chemical Testing	--	--	--	--	N.D.	N.D.	Comply
124	EDXRF	BL	BL	BL	BL	--	--	--
	Wet Chemical Testing	--	--	--	--	--	--	Comply
125	EDXRF	BL	BL	BL	BL	--	--	--
	Wet Chemical Testing	--	--	--	--	--	--	Comply
126	EDXRF	BL	BL	BL	BL	--	--	--
	Wet Chemical Testing	--	--	--	--	--	--	Comply

In no circumstances shall the Company's responsibility extend beyond inspection, testing and reporting upon the samples actually drawn from the bulk and inspected, tested and surveyed by the Company and any inference to be drawn from the results of such inspection or survey or testing shall be entirely in the discretion and at the sole and exclusive responsibility of the Principal. This test report cannot be reproduced except in full.

FLION TESTING TECHNOLOGIES

Add: Gangzi Industrial Park, Furong Industrial Area, Xinqiao Village, Shajing Town, Bao'an District, Shenzhen City

Tel : 86-0755-2724 8885

Fax : 86-0755-2746 0090

Http://www.cnfft.com



Part No.	Results	Cd	Pb	Hg	Cr ⁶⁺	PBBs	PBDEs	Conclusion on RoHS
127	EDXRF	BL	BL	BL	BL	--	--	--
	Wet Chemical Testing	--	--	--	--	--	--	Comply
128	EDXRF	BL	BL	BL	BL	BL	BL	--
	Wet Chemical Testing	--	--	--	--	--	--	Comply
129	EDXRF	BL	BL	BL	BL	BL	BL	--
	Wet Chemical Testing	--	--	--	--	--	--	Comply
130	EDXRF	BL	BL	BL	BL	--	--	--
	Wet Chemical Testing	--	--	--	--	--	--	Comply
131	EDXRF	BL	BL	BL	BL	BL	BL	--
	Wet Chemical Testing	--	--	--	--	--	--	Comply
132	EDXRF	BL	BL	BL	BL	--	--	--
	Wet Chemical Testing	--	--	--	--	--	--	Comply
133	EDXRF	BL	BL	BL	BL	BL	BL	--
	Wet Chemical Testing	--	--	--	--	--	--	Comply
134	EDXRF	BL	BL	BL	BL	BL	BL	--
	Wet Chemical Testing	--	--	--	--	--	--	Comply
135	EDXRF	BL	BL	BL	BL	BL	BL	--
	Wet Chemical Testing	--	--	--	--	--	--	Comply
136	EDXRF	BL	BL	BL	BL	BL	BL	--
	Wet Chemical Testing	--	--	--	--	--	--	Comply
137*	EDXRF	BL	IN	BL	BL	BL	BL	--
	Wet Chemical Testing	--	33140 ppm	--	--	--	--	Exemption
138	EDXRF	BL	BL	BL	BL	--	--	--
	Wet Chemical Testing	--	--	--	--	--	--	Comply
139	EDXRF	BL	BL	BL	BL	--	--	--
	Wet Chemical Testing	--	--	--	--	--	--	Comply
140	EDXRF	BL	BL	BL	BL	--	--	--
	Wet Chemical Testing	--	--	--	--	--	--	Comply

In no circumstances shall the Company's responsibility extend beyond inspection, testing and reporting upon the samples actually drawn from the bulk and inspected, tested and surveyed by the Company and any inference to be drawn from the results of such inspection or survey or testing shall be entirely in the discretion and at the sole and exclusive responsibility of the Principal. This test report cannot be reproduced except in full.

FLION TESTING TECHNOLOGIES

Add: Gangzi Industrial Park, Furong Industrial Area, Xinqiao Village, Shajing Town, Bao'an District, Shenzhen City

Tel : 86-0755-2724 8885 Fax : 86-0755-2746 0090 Http://www.cnfft.com



Part No.	Results	Cd	Pb	Hg	Cr ⁶⁺	PBBs	PBDEs	Conclusion on RoHS
141	EDXRF	BL	BL	BL	BL	--	--	--
	Wet Chemical Testing	--	--	--	--	--	--	Comply
142	EDXRF	BL	BL	BL	BL	BL	BL	--
	Wet Chemical Testing	--	--	--	--	--	--	Comply
143	EDXRF	BL	BL	BL	BL	--	--	--
	Wet Chemical Testing	--	--	--	--	--	--	Comply
144	EDXRF	BL	BL	BL	BL	BL	BL	--
	Wet Chemical Testing	--	--	--	--	--	--	Comply
145	EDXRF	BL	BL	BL	BL	BL	BL	--
	Wet Chemical Testing	--	--	--	--	--	--	Comply
146	EDXRF	BL	BL	BL	BL	--	--	--
	Wet Chemical Testing	--	--	--	--	--	--	Comply
147	EDXRF	BL	BL	BL	BL	IN	IN	--
	Wet Chemical Testing	--	--	--	--	N.D.	N.D.	Comply
148	EDXRF	BL	BL	BL	BL	BL	BL	--
	Wet Chemical Testing	--	--	--	--	--	--	Comply
149	EDXRF	BL	BL	BL	BL	--	--	--
	Wet Chemical Testing	--	--	--	--	--	--	Comply
150	EDXRF	BL	BL	BL	BL	BL	BL	--
	Wet Chemical Testing	--	--	--	--	--	--	Comply

In no circumstances shall the Company's responsibility extend beyond inspection, testing and reporting upon the samples actually drawn from the bulk and inspected, tested and surveyed by the Company and any inference to be drawn from the results of such inspection or survey or testing shall be entirely in the discretion and at the sole and exclusive responsibility of the Principal. This test report cannot be reproduced except in full.

FLION TESTING TECHNOLOGIES

Add: Gangzi Industrial Park, Furong Industrial Area, Xinqiao Village, Shajing Town, Bao'an District, Shenzhen City

Tel : 86-0755-2724 8885

Fax : 86-0755-2746 0090

Http://www.cnfft.com



Phthalates Test Results:

Test Item	CAS No.	Test Method / Instrument	MDL (%)	Limit (%)
Dibutyl phthalate (DBP)	84-74-2	IEC 62321-8:2017 / GC-MS	0.005	0.1
Butyl benzyl phthalate (BBP)	85-68-7	IEC 62321-8:2017 / GC-MS	0.005	0.1
Bis-(2-ethylhexyl)phthalate (DEHP)	117-81-7	IEC 62321-8:2017 / GC-MS	0.005	0.1
Di-iso-butyl ortho-phthalate (DIBP)	84-69-5	IEC 62321-8:2017 / GC-MS	0.005	0.1

Test Item	Result (%)							
	2	3	4	5	7	10	11	12
Dibutyl phthalate (DBP)	N.D.	N.D.	N.D.	N.D.	N.D.	N.D.	N.D.	N.D.
Butyl benzyl phthalate (BBP)	N.D.	N.D.	N.D.	N.D.	N.D.	N.D.	N.D.	N.D.
Bis-(2-ethylhexyl)phthalate (DEHP)	N.D.	N.D.	N.D.	N.D.	N.D.	N.D.	N.D.	N.D.
Di-iso-butyl ortho-phthalate (DIBP)	N.D.	N.D.	N.D.	N.D.	N.D.	N.D.	N.D.	N.D.

Test Item	Result (%)									
	14	21	22	25	28	29	31	32	33	34
Dibutyl phthalate (DBP)	N.D.	N.D.	N.D.	N.D.	N.D.	N.D.	N.D.	N.D.	N.D.	N.D.
Butyl benzyl phthalate (BBP)	N.D.	N.D.	N.D.	N.D.	N.D.	N.D.	N.D.	N.D.	N.D.	N.D.
Bis-(2-ethylhexyl)phthalate (DEHP)	N.D.	N.D.	N.D.	N.D.	N.D.	N.D.	N.D.	N.D.	N.D.	N.D.
Di-iso-butyl ortho-phthalate (DIBP)	N.D.	N.D.	N.D.	N.D.	N.D.	N.D.	N.D.	N.D.	N.D.	N.D.

In no circumstances shall the Company's responsibility extend beyond inspection, testing and reporting upon the samples actually drawn from the bulk and inspected, tested and surveyed by the Company and any inference to be drawn from the results of such inspection or survey or testing shall be entirely in the discretion and at the sole and exclusive responsibility of the Principal. This test report cannot be reproduced except in full.



Test Item	Result (%)								
	36	37	42	44	45	47	50	51	52
Dibutyl phthalate (DBP)	N.D.	N.D.	N.D.	N.D.	N.D.	N.D.	N.D.	N.D.	N.D.
Butyl benzyl phthalate (BBP)	N.D.	N.D.	N.D.	N.D.	N.D.	N.D.	N.D.	N.D.	N.D.
Bis-(2-ethylhexyl)phthalate (DEHP)	N.D.	N.D.	N.D.	N.D.	N.D.	N.D.	N.D.	N.D.	N.D.
Di-iso-butyl ortho-phthalate (DIBP)	N.D.	N.D.	N.D.	N.D.	N.D.	N.D.	N.D.	N.D.	N.D.

Test Item	Result (%)							
	55	57	58	59	60	61	63	64
Dibutyl phthalate (DBP)	N.D.	N.D.	N.D.	N.D.	N.D.	N.D.	N.D.	N.D.
Butyl benzyl phthalate (BBP)	N.D.	N.D.	N.D.	N.D.	N.D.	N.D.	N.D.	N.D.
Bis-(2-ethylhexyl)phthalate (DEHP)	N.D.	N.D.	N.D.	N.D.	N.D.	N.D.	N.D.	N.D.
Di-iso-butyl ortho-phthalate (DIBP)	N.D.	N.D.	N.D.	N.D.	N.D.	N.D.	N.D.	N.D.

Test Item	Result (%)							
	65	66	68	74	75	76	77	78
Dibutyl phthalate (DBP)	N.D.	N.D.	N.D.	N.D.	N.D.	N.D.	N.D.	N.D.
Butyl benzyl phthalate (BBP)	N.D.	N.D.	N.D.	N.D.	N.D.	N.D.	N.D.	N.D.
Bis-(2-ethylhexyl)phthalate (DEHP)	N.D.	N.D.	N.D.	N.D.	N.D.	N.D.	N.D.	N.D.
Di-iso-butyl ortho-phthalate (DIBP)	N.D.	N.D.	N.D.	N.D.	N.D.	N.D.	N.D.	N.D.

In no circumstances shall the Company's responsibility extend beyond inspection, testing and reporting upon the samples actually drawn from the bulk and inspected, tested and surveyed by the Company and any inference to be drawn from the results of such inspection or survey or testing shall be entirely in the discretion and at the sole and exclusive responsibility of the Principal. This test report cannot be reproduced except in full.

FLION TESTING TECHNOLOGIES

Add: Gangzi Industrial Park, Furong Industrial Area, Xinqiao Village, Shajing Town, Bao'an District, Shenzhen City

Tel : 86-0755-2724 8885

Fax : 86-0755-2746 0090

Http://www.cnfft.com



Test Item	Result (%)							
	81	82	83	86	87	89	90	91
Dibutyl phthalate (DBP)	N.D.	N.D.	N.D.	N.D.	N.D.	N.D.	N.D.	N.D.
Butyl benzyl phthalate (BBP)	N.D.	N.D.	N.D.	N.D.	N.D.	N.D.	N.D.	N.D.
Bis-(2-ethylhexyl)phthalate (DEHP)	N.D.	N.D.	N.D.	N.D.	N.D.	N.D.	N.D.	N.D.
Di-iso-butyl ortho-phthalate (DIBP)	N.D.	N.D.	N.D.	N.D.	N.D.	N.D.	N.D.	N.D.

Test Item	Result (%)							
	92	93	94	97	99	105	106	107
Dibutyl phthalate (DBP)	N.D.	N.D.	N.D.	N.D.	N.D.	N.D.	N.D.	N.D.
Butyl benzyl phthalate (BBP)	N.D.	N.D.	N.D.	N.D.	N.D.	N.D.	N.D.	N.D.
Bis-(2-ethylhexyl)phthalate (DEHP)	N.D.	N.D.	N.D.	N.D.	N.D.	N.D.	N.D.	N.D.
Di-iso-butyl ortho-phthalate (DIBP)	N.D.	N.D.	N.D.	N.D.	N.D.	N.D.	N.D.	N.D.

Test Item	Result (%)							
	108	109	111	112	115	117	118	122
Dibutyl phthalate (DBP)	N.D.	N.D.	N.D.	N.D.	N.D.	N.D.	N.D.	N.D.
Butyl benzyl phthalate (BBP)	N.D.	N.D.	N.D.	N.D.	N.D.	N.D.	N.D.	N.D.
Bis-(2-ethylhexyl)phthalate (DEHP)	N.D.	N.D.	N.D.	N.D.	N.D.	N.D.	N.D.	N.D.
Di-iso-butyl ortho-phthalate (DIBP)	N.D.	N.D.	N.D.	N.D.	N.D.	N.D.	N.D.	N.D.

In no circumstances shall the Company's responsibility extend beyond inspection, testing and reporting upon the samples actually drawn from the bulk and inspected, tested and surveyed by the Company and any inference to be drawn from the results of such inspection or survey or testing shall be entirely in the discretion and at the sole and exclusive responsibility of the Principal. This test report cannot be reproduced except in full.

FLION TESTING TECHNOLOGIES

Add: Gangzi Industrial Park, Furong Industrial Area, Xinqiao Village, Shajing Town, Bao'an District, Shenzhen City

Tel : 86-0755-2724 8885

Fax : 86-0755-2746 0090

Http://www.cnfft.com



Test Item	Result (%)							
	123	128	129	131	133	134	135	136
Dibutyl phthalate (DBP)	N.D.	N.D.	N.D.	N.D.	N.D.	N.D.	N.D.	N.D.
Butyl benzyl phthalate (BBP)	N.D.	N.D.	N.D.	N.D.	N.D.	N.D.	N.D.	N.D.
Bis-(2-ethylhexyl)phthalate (DEHP)	N.D.	N.D.	N.D.	N.D.	N.D.	N.D.	N.D.	N.D.
Di-iso-butyl ortho-phthalate (DIBP)	N.D.	N.D.	N.D.	N.D.	N.D.	N.D.	N.D.	N.D.

Test Item	Result (%)					
	142	144	145	147	148	150
Dibutyl phthalate (DBP)	N.D.	N.D.	N.D.	N.D.	N.D.	N.D.
Butyl benzyl phthalate (BBP)	N.D.	N.D.	N.D.	N.D.	N.D.	N.D.
Bis-(2-ethylhexyl)phthalate (DEHP)	N.D.	N.D.	N.D.	N.D.	N.D.	N.D.
Di-iso-butyl ortho-phthalate (DIBP)	N.D.	N.D.	N.D.	N.D.	N.D.	N.D.

Remark:

- (a) It is the result on total Br while test item on restricted substances is PBBs/PBDEs. It is the result on total Cr while test item on restricted substances is Cr⁶⁺.
- (b) Results are obtained by EDXRF for primary screening, and further chemical testing by ICP (for Cd, Pb,Hg), UV-VIS (for CrVI) and GC/MS (for PBBs, PBDEs) is recommended to be performed, if the concentration exceeds the below warning value according to IEC 62321-3-1: 2013 (Unit: mg/kg)

Element	Polymer	Metal	Composite Materials
Cd	$BL \leq (70-3\sigma) < X < (130+3\sigma) \leq OL$	$BL \leq (70-3\sigma) < X < (130+3\sigma) \leq OL$	$LOD < X < (150+3\sigma) \leq OL$
Pb	$BL \leq (700-3\sigma) < X < (1300+3\sigma) \leq OL$	$BL \leq (700-3\sigma) < X < (1300+3\sigma) \leq OL$	$BL \leq (500-3\sigma) < X < (1500+3\sigma) \leq OL$
Hg	$BL \leq (700-3\sigma) < X < (1300+3\sigma) \leq OL$	$BL \leq (700-3\sigma) < X < (1300+3\sigma) \leq OL$	$BL \leq (500-3\sigma) < X < (1500+3\sigma) \leq OL$
Br	$BL \leq (300-3\sigma) < X$	Not applicable	$BL \leq (250-3\sigma) < X$
Cr	$BL \leq (700-3\sigma) < X$	$BL \leq (700-3\sigma) < X$	$BL \leq (500-3\sigma) < X$

RoHS Limit:

Restricted Substances	Limit
Lead(Pb) content	0.1% (1000ppm)
Cadmium(Cd) content	0.01% (100ppm)
Mercury(Hg) content	0.1% (1000ppm)
Hexavalent Chromium(CrVI) content	0.1% (1000ppm)
Polybrominated Biphenyls (PBBs) content	0.1% (1000ppm)
Polybrominated Diphenyl Ethers (PBDEs) content	0.1% (1000ppm)

The limits were quoted from Annex II of 2011/65/EU for homogeneous material.

In no circumstances shall the Company's responsibility extend beyond inspection, testing and reporting upon the samples actually drawn from the bulk and inspected, tested and surveyed by the Company and any inference to be drawn from the results of such inspection or survey or testing shall be entirely in the discretion and at the sole and exclusive responsibility of the Principal. This test report cannot be reproduced except in full.



Report No.: HLF25009040E

Date: Sep 9, 2025

Page 17 of 20

(c) BL = Below Limit, OL = Over Limit, IN = Inconclusive, LOD = Limit of Detection

(d) The XRF screening test for RoHS elements – The reading may be different to the actual content in the sample be of non-uniformity composition

(e) mg/kg = ppm = 0.0001%, N.D. = not detected (<MDL), --- = not conducted

(f) Unit and Method Detection Limit (MDL) in wet chemical test:

Test Items	Pb	Cd	Hg
Units	mg/kg	mg/kg	mg/kg
MDL	2	2	2

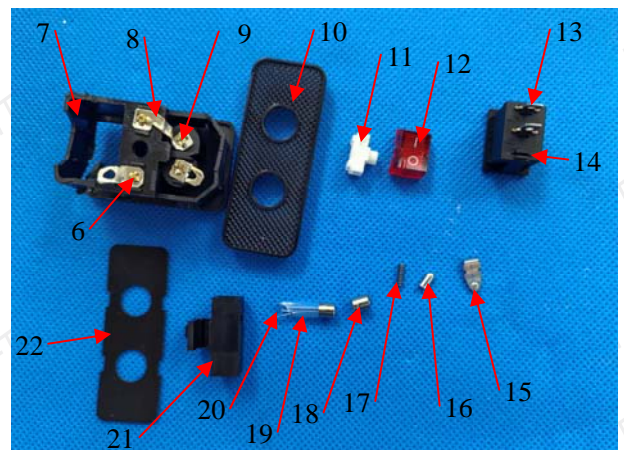
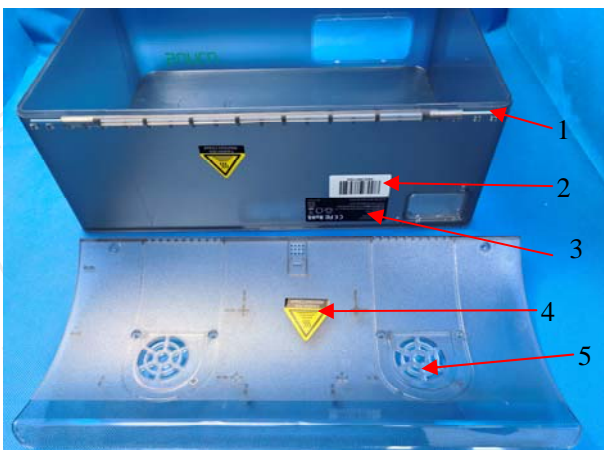
The MDL for single compound of PBBs & PBDEs is 5 mg/kg and MDL of Cr⁶⁺ for polymer & composite sample is 2 mg/kg.

(g) According to IEC62321-7-2:2017, result on Cr⁶⁺ for metal sample is shown as Positive/Negative. Positive = Presence of Cr⁶⁺ coating, Negative = Absence of Cr⁶⁺ coating.

(h) “*” (The result of No.137): The sample is ceramic. According to the customer's declaration, in accordance with the exemption provisions of the RoHS Directive 2011/65/EU, the Pb content in the sample has no limit and can be exempted.

Remark: The above result(s) was/were only given as the informality value and only for reference

Sample photo



In no circumstances shall the Company's responsibility extend beyond inspection, testing and reporting upon the samples actually drawn from the bulk and inspected, tested and surveyed by the Company and any inference to be drawn from the results of such inspection or survey or testing shall be entirely in the discretion and at the sole and exclusive responsibility of the Principal. This test report cannot be reproduced except in full.

FLION TESTING TECHNOLOGIES

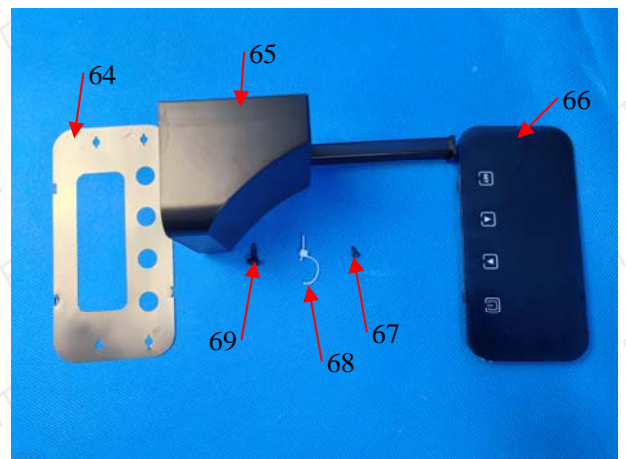
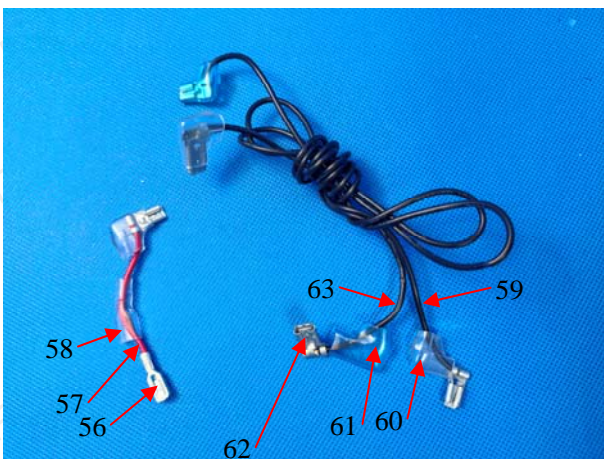
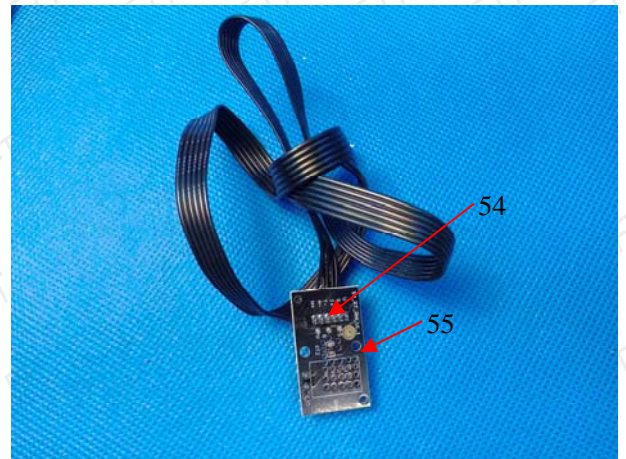
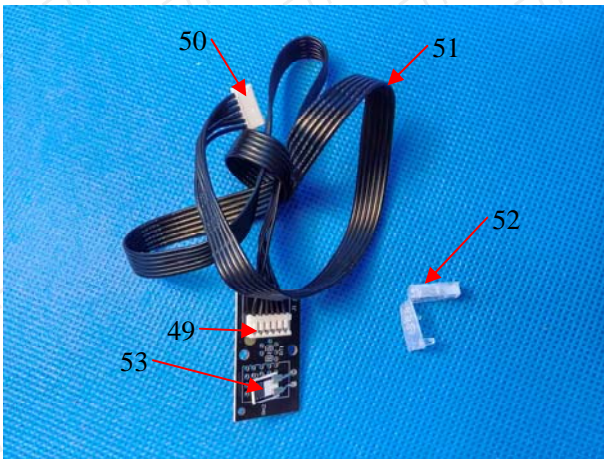
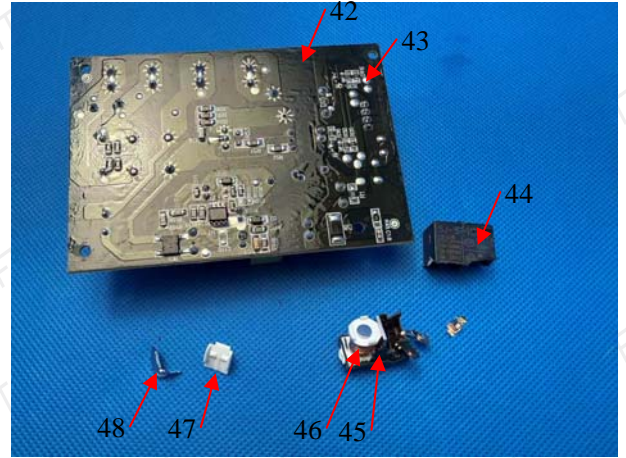
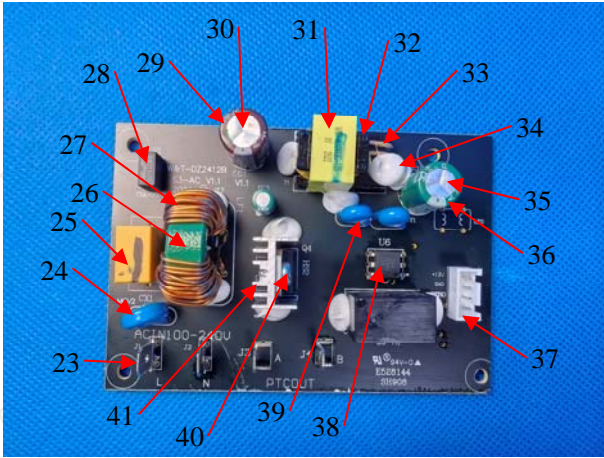
Add: Gangzi Industrial Park, Furong Industrial Area, Xinqiao Village, Shajing Town, Bao'an District, Shenzhen City

Tel : 86-0755-2724 8885

Fax : 86-0755-2746 0090

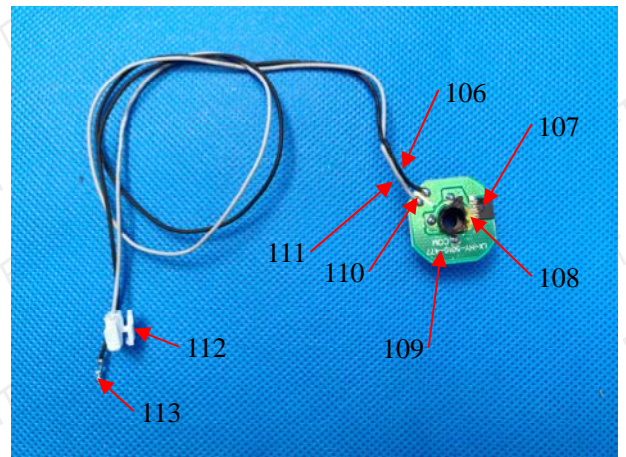
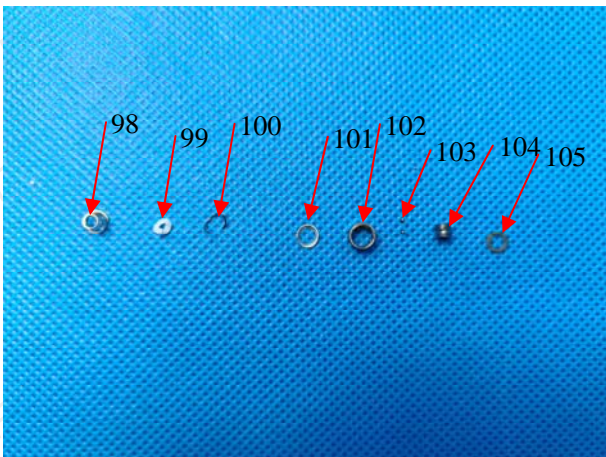
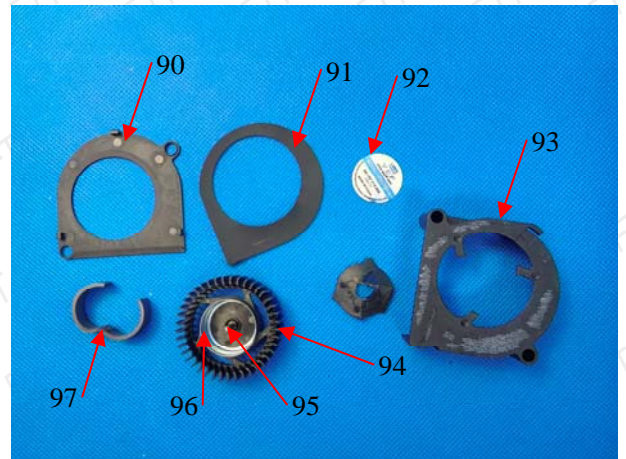
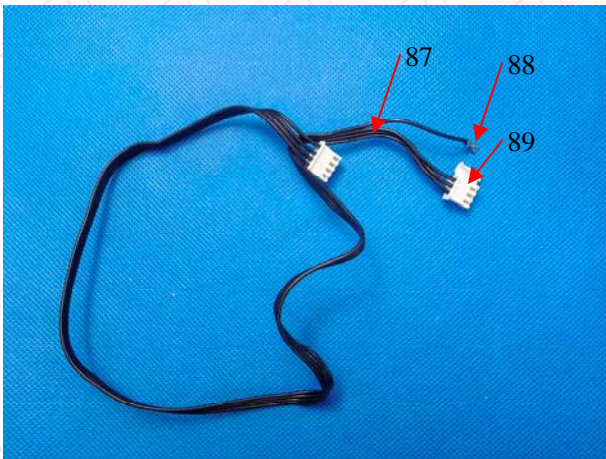
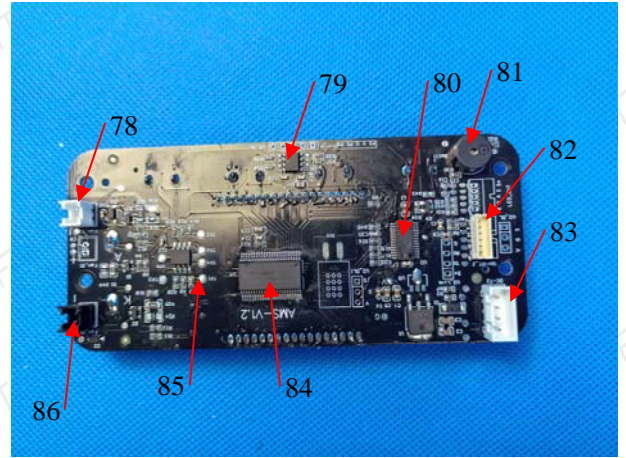
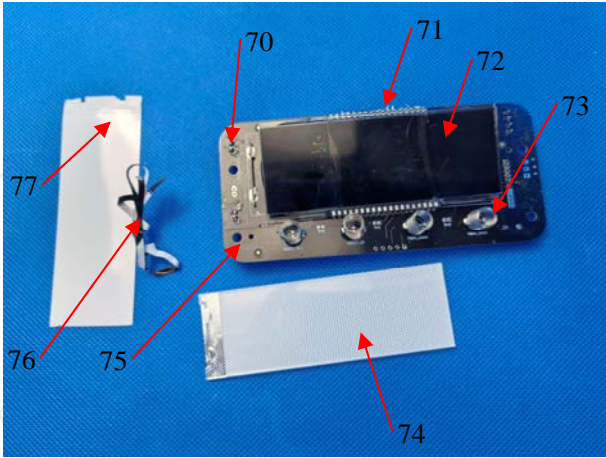
Http://www.cnftt.com





In no circumstances shall the Company's responsibility extend beyond inspection, testing and reporting upon the samples actually drawn from the bulk and inspected, tested and surveyed by the Company and any inference to be drawn from the results of such inspection or survey or testing shall be entirely in the discretion and at the sole and exclusive responsibility of the Principal. This test report cannot be reproduced except in full.





In no circumstances shall the Company's responsibility extend beyond inspection, testing and reporting upon the samples actually drawn from the bulk and inspected, tested and surveyed by the Company and any inference to be drawn from the results of such inspection or survey or testing shall be entirely in the discretion and at the sole and exclusive responsibility of the Principal. This test report cannot be reproduced except in full.

FLION TESTING TECHNOLOGIES

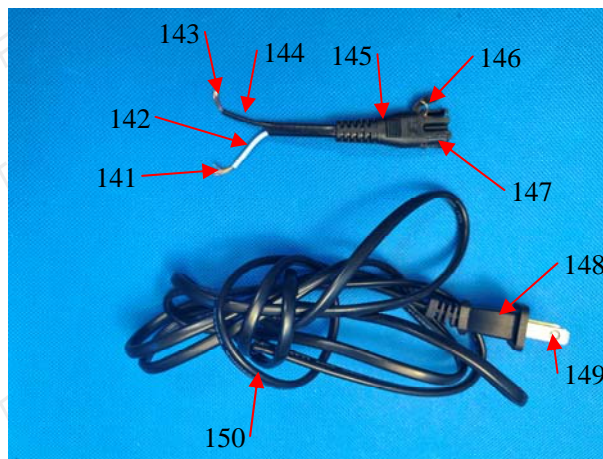
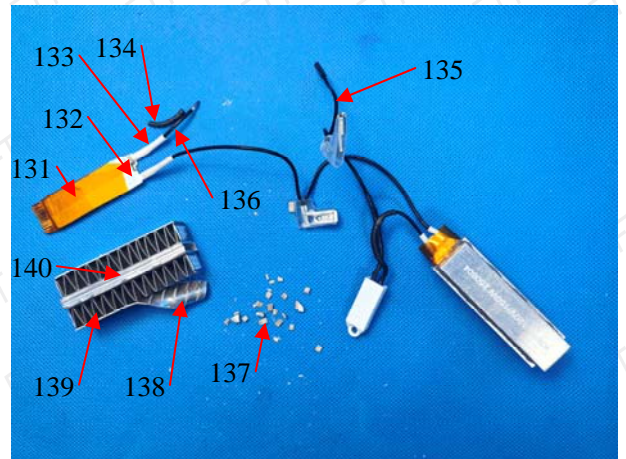
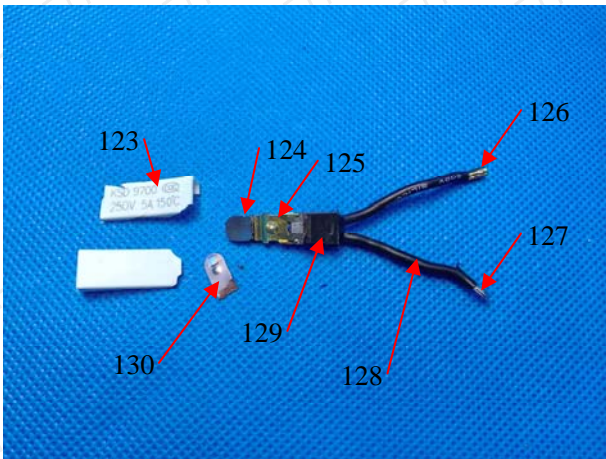
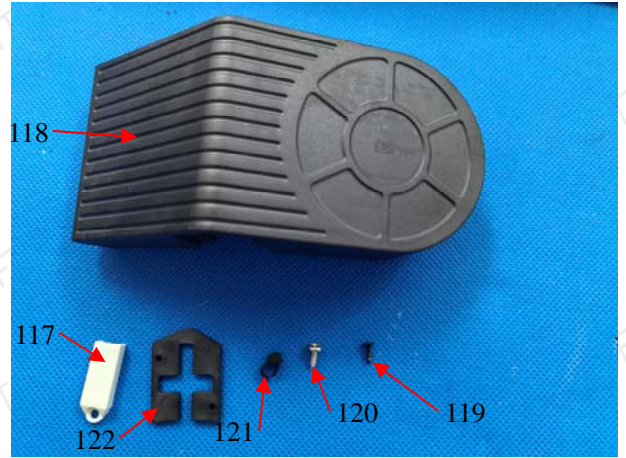
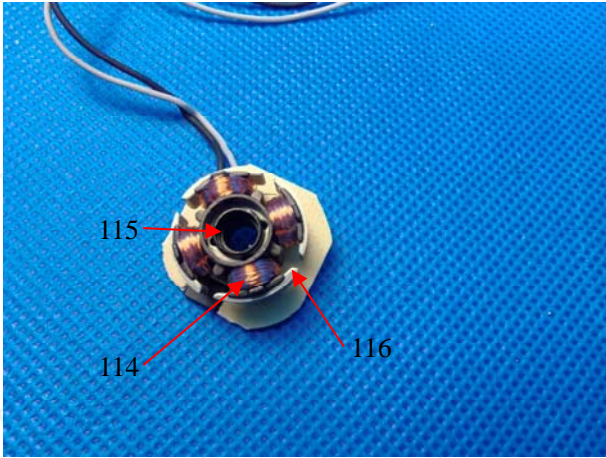
Add: Gangzi Industrial Park, Furong Industrial Area, Xinqiao Village, Shajing Town, Bao'an District, Shenzhen City

Tel : 86-0755-2724 8885

Fax : 86-0755-2746 0090

Http://www.cnftt.com





Note: The results shown in this report refer only to the sample(s) tested.

***** End of Report *****

In no circumstances shall the Company's responsibility extend beyond inspection, testing and reporting upon the samples actually drawn from the bulk and inspected, tested and surveyed by the Company and any inference to be drawn from the results of such inspection or survey or testing shall be entirely in the discretion and at the sole and exclusive responsibility of the Principal. This test report cannot be reproduced except in full.

