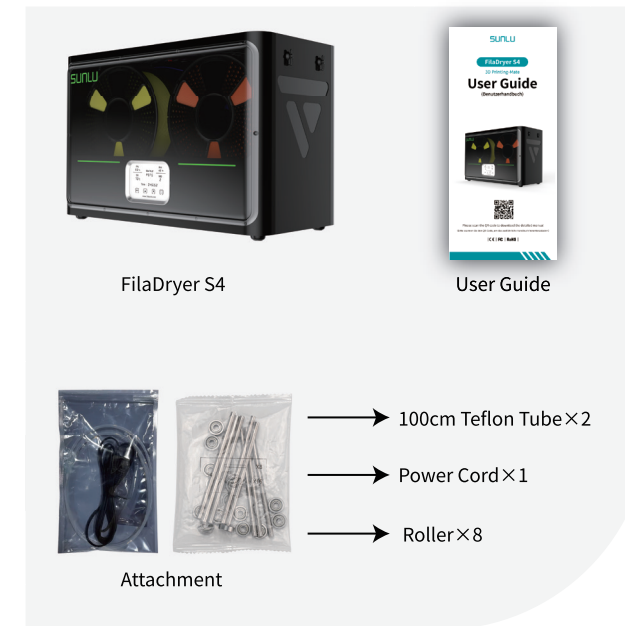


Ⓔ When the RH is flashing, click the \uparrow/\downarrow button to preset the automatic startup humidity value of MO2 mode (Maximum 50%, minimum 30%).

Ⓕ When the PV is flashing, click the \uparrow/\downarrow button to switch between MO1\MO2 Modes
 MO 1 Time control mode (shut down after countdown)
 MO 2 Humidity control mode (after the countdown ends, when the humidity slowly rises to 50% or the User-set humidity value, it will automatically start heating until the humidity drops to 25%)

Note: If the humidity does not decrease to the target value, please check whether the top cover is properly closed, or appropriately increase the set heating temperature by 5°C.

Packing Listing



Temperature Reference

Material	PLA/PLA+	WOOD	PETG	TPU	PVA	PVB	ASA	ABS	PA/PC
Baking Temp	50-55°C			65-70°C			65-70°C		
Time	4-5h			4-5h			7-9h		

Certificate of Conformity



After-Sales Service

- The product comes with a one-year warranty under normal operating conditions as shown in this manual.
- The warranty does not cover damages caused by using power cables of different specifications or incorrect operation as per the instructions in the manual during the warranty period.

Enjoy 3D Printing with SUNLU



Zhuhai Sunlu Industrial Co., Ltd.

Official website: www.3dsunlu.com
 Brand cooperation: branding@sunlu.com
 Business cooperation: sales@sunlu.com
 After-sales service: support@sunlu.com
 Manufacturing Address: Sunlu Technology Park, Tanzhou Town, Zhongshan City, Guangdong Province, China.

SUNLU

FilaDryer S4

3D Printing-Mate

User Guide



Please scan the QR code to download the detailed manual

CE | FC | RoHS

Foreword

Thank you for using SUNLU products!
 If you have any questions about this product, please contact the customer service of the official store where you purchased it.
 Please read this manual carefully to avoid wrong installation and use.
 Scan the QR code on the cover to download detailed instructions for use.

01/ Product Parts Description



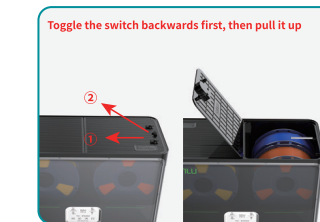
- ① ③ ⑤: Filament outlet
- ②: Control Panel
- ④: Top Cover
- ⑥: Power Input

02/ Usage Steps



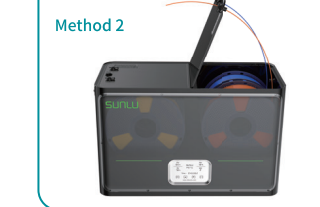
Step 1

It is recommended to cut the Teflon tube to 8cm.



Step 2

Open the top cover and put the filament into the dryer box.



Step 3

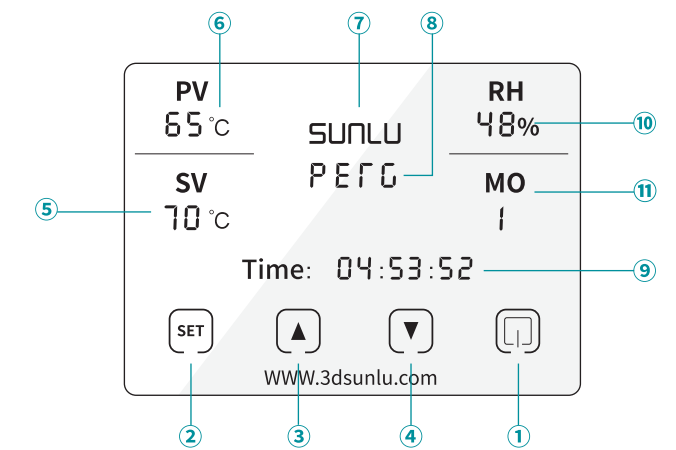
Thread the filament through the filament output of the filament dryer and the Teflon tube.



Step 4

Connect the power supply and press the switch.

03/ Touch Screen



- Click the \square to turn on; double-click the \square button to turn off.
- Click the M button to select menu., pay attention to the flashing status of screen characters at this time.
- Click the \uparrow button to increase the value (or change the state).
- Click the \downarrow button to decrease the value (or change the state).
- When the SV is flashing, the target heating temperature can be set. Click the \uparrow/\downarrow button to increase/ decrease the setting temperature.
- When the C is flashing, Click the \uparrow/\downarrow button to Switch $^{\circ}\text{C}/^{\circ}\text{F}$ unit.
- When the SUNLU is flashing, Click the \uparrow/\downarrow button to change LED running light status (flow led, always on or turn off)
- When the PETG is flashing, Click the \uparrow/\downarrow button to set the type of filament and use the recommended temperature parameters.
- When the Time 04:53:52 is flashing, Click the \uparrow/\downarrow button to set the drying time (Maximum 99h)