



中国认可
国际互认
检测
TESTING
CNAS L6478



TEST REPORT

Report No. : WTF25F01018676R1C

Job No. : FSW2501210883CJ

Applicant : Sunlu (Guangdong) Technology Co., Ltd.

Address : Sunlu Technology Park, Intersection of Huanzhou North Road and Tanzhou Avenue, Tanzhou Town, Zhongshan City, Guangdong Province, China.

Sample Name : Refer to next page (s)

Test Requested : In according to the EU RoHS Directive 2011/65/EU and its amendment (EU) No.2015/863, to determine the 10 restricted substances content in the submitted sample.

Test Method : Refer to next page (s)

Test Conclusion : **Pass** (Please refer to next pages for details)

Date of Receipt sample : 2025-01-21

Testing period : 2025-01-21 to 2025-02-10

Date of Issue : 2025-02-12

Test Result : Refer to next page (s)

Prepared By:

Waltek Testing Group (Foshan) Co., Ltd.

Address: No.13-19, 2/F., 2nd Building, Sunlink Machinery City, Xingye 4 Road, Guanglong Industrial Park, Chihua Neighborhood Committee, Chencun Town, Shunde District, Foshan, Guangdong, China
Tel:+86-757-23811398 Fax:+86-757-23811381 E-mail:info@waltek.com.cn

Signed for and on behalf of
Waltek Testing Group (Foshan) Co., Ltd.

Swing Liang

Swing.Liang



WTF25F01018676R1C



Report No.: WTF25F01018676R1C

Job No.: FSW2501210883CJ

Specimen No.	Specimen Description	Sample Name
9	Transparent liquid	Standard Resin
10	Grey liquid	Standard Plus Resin
11	Black liquid	Water-Wash Standard Resin
12	Grey liquid	ABS-Like Resin
13	White liquid	Toughness Resin
14	Black liquid	Nylon-Like Resin
15	Grey liquid	Water Wash ABS Resin
16	Transparent liquid	Flexible Resin
17	Grey liquid	High Temperature Plus Resin
18	Grey liquid	High Speed Standard Resin
19	Yellow liquid	Dental Implant Resin
20	Grey liquid	Dental Model Resin
21	White liquid	Glow In The Dark Resin
22	Transparent liquid	High Clear Resin
23	Grey liquid	14K Standard Resin
24	Black liquid	14K ABS-Like Resin
25	Grey liquid	14K Water Wash ABS-Like Resin
26	Grey liquid	14K Water Wash Standard Resin



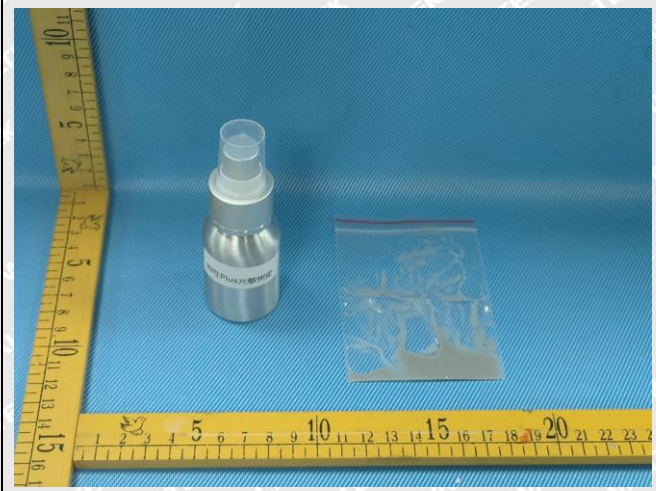
Report No.: WTF25F01018676R1C

Job No.: FSW2501210883CJ

Sample photo:



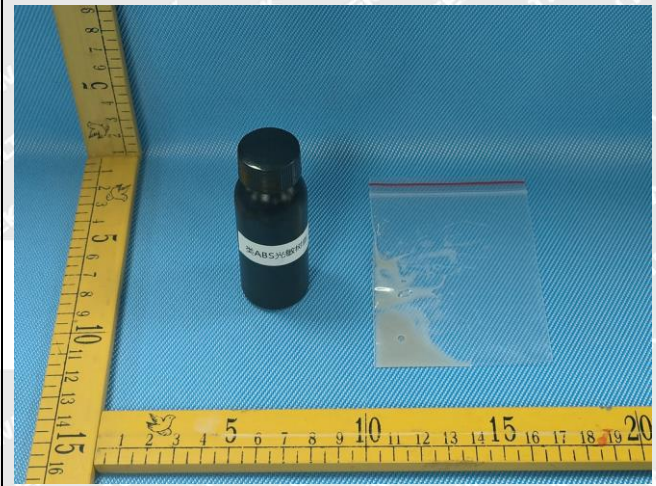
No.9



No.10



No.11



No.12



No.13



No.14



No.15



No.16



No.17



No.18



No.19



No.20



No.21



No.22



No.23



No.24



No.25



No.26



Report No.: WTF25F01018676R1C

Job No.: FSW2501210883CJ

Test Results:

Test Item(s)	Unit	Test Method & Test Equipment	Result	Limit	LOQ
			No.9		
Lead (Pb)	mg/kg	IEC 62321-5:2013, ICP-OES	ND	1000	2
Cadmium (Cd)	mg/kg	IEC 62321-5:2013, ICP-OES	ND	100	2
Mercury (Hg)	mg/kg	IEC62321-4:2013+AMD1:2017 CSV, ICP-OES	ND	1000	2
Hexavalent Chromium (Cr ⁶⁺)	mg/kg	IEC 62321-7-2:2017, UV-Vis	ND	1000	8
Sum of PBBs	mg/kg	--	ND	1000	--
Monobromobiphenyl	mg/kg	IEC 62321-6:2015, GC-MS	ND	--	5
Dibromobiphenyl	mg/kg		ND	--	5
Tribromobiphenyl	mg/kg		ND	--	5
Tetrabromobiphenyl	mg/kg		ND	--	5
Pentabromobiphenyl	mg/kg		ND	--	5
Hexabromobiphenyl	mg/kg		ND	--	5
Heptabromobiphenyl	mg/kg		ND	--	5
Octabromobiphenyl	mg/kg		ND	--	5
Nonabromobiphenyl	mg/kg		ND	--	5
Decabromobiphenyl	mg/kg		ND	--	5
Sum of PBDEs	mg/kg	--	ND	1000	--
Monobromodiphenyl ether	mg/kg	IEC 62321-6:2015, GC-MS	ND	--	5
Dibromodiphenyl ether	mg/kg		ND	--	5
Tribromodiphenyl ether	mg/kg		ND	--	5
Tetrabromodiphenyl ether	mg/kg		ND	--	5
Pentabromodiphenyl ether	mg/kg		ND	--	5
Hexabromodiphenyl ether	mg/kg		ND	--	5
Heptabromodiphenyl ether	mg/kg		ND	--	5
Octabromodiphenyl ether	mg/kg		ND	--	5
Nonabromodiphenyl ether	mg/kg		ND	--	5
Decabromodiphenyl ether	mg/kg		ND	--	5
Bis (2-ethylhexyl)-phthalate (DEHP)	mg/kg	IEC 62321-8:2017, GC-MS	ND	1000	50
Dibutyl phthalate (DBP)	mg/kg		ND	1000	50
Benzylbutyl phthalate (BBP)	mg/kg		ND	1000	50
Diisobutyl phthalate (DIBP)	mg/kg		ND	1000	50
Conclusion	--	--	Pass	--	--



Report No.: WTF25F01018676R1C

Job No.: FSW2501210883CJ

Test Item(s)	Unit	Test Method & Test Equipment	Result	Limit	LOQ	
			No.10			
Lead (Pb)	mg/kg	IEC 62321-5:2013, ICP-OES	ND	1000	2	
Cadmium (Cd)	mg/kg	IEC 62321-5:2013, ICP-OES	ND	100	2	
Mercury (Hg)	mg/kg	IEC62321-4:2013+AMD1:2017 CSV, ICP-OES	ND	1000	2	
Hexavalent Chromium (Cr ⁶⁺)	mg/kg	IEC 62321-7-2:2017, UV-Vis	ND	1000	8	
Sum of PBBs	mg/kg	--	ND	1000	--	
Monobromobiphenyl	mg/kg	IEC 62321-6:2015, GC-MS	ND	--	5	
Dibromobiphenyl	mg/kg		ND	--	5	
Tribromobiphenyl	mg/kg		ND	--	5	
Tetrabromobiphenyl	mg/kg		ND	--	5	
Pentabromobiphenyl	mg/kg		ND	--	5	
Hexabromobiphenyl	mg/kg		ND	--	5	
Heptabromobiphenyl	mg/kg		ND	--	5	
Octabromobiphenyl	mg/kg		ND	--	5	
Nonabromobiphenyl	mg/kg		ND	--	5	
Decabromobiphenyl	mg/kg		ND	--	5	
Sum of PBDEs	mg/kg		--	ND	1000	--
Monobromodiphenyl ether	mg/kg		IEC 62321-6:2015, GC-MS	ND	--	5
Dibromodiphenyl ether	mg/kg	ND		--	5	
Tribromodiphenyl ether	mg/kg	ND		--	5	
Tetrabromodiphenyl ether	mg/kg	ND		--	5	
Pentabromodiphenyl ether	mg/kg	ND		--	5	
Hexabromodiphenyl ether	mg/kg	ND		--	5	
Heptabromodiphenyl ether	mg/kg	ND		--	5	
Octabromodiphenyl ether	mg/kg	ND		--	5	
Nonabromodiphenyl ether	mg/kg	ND		--	5	
Decabromodiphenyl ether	mg/kg	ND		--	5	
Bis (2-ethylhexyl)-phthalate (DEHP)	mg/kg	IEC 62321-8:2017, GC-MS		ND	1000	50
Dibutyl phthalate (DBP)	mg/kg			ND	1000	50
Benzylbutyl phthalate (BBP)	mg/kg		ND	1000	50	
Diisobutyl phthalate (DIBP)	mg/kg		ND	1000	50	
Conclusion	--	--	Pass	--	--	



Report No.: WTF25F01018676R1C

Job No.: FSW2501210883CJ

Test Item(s)	Unit	Test Method & Test Equipment	Result	Limit	LOQ	
			No.11			
Lead (Pb)	mg/kg	IEC 62321-5:2013, ICP-OES	ND	1000	2	
Cadmium (Cd)	mg/kg	IEC 62321-5:2013, ICP-OES	ND	100	2	
Mercury (Hg)	mg/kg	IEC62321-4:2013+AMD1:2017 CSV, ICP-OES	ND	1000	2	
Hexavalent Chromium (Cr ⁶⁺)	mg/kg	IEC 62321-7-2:2017, UV-Vis	ND	1000	8	
Sum of PBBs	mg/kg	--	ND	1000	--	
Monobromobiphenyl	mg/kg	IEC 62321-6:2015, GC-MS	ND	--	5	
Dibromobiphenyl	mg/kg		ND	--	5	
Tribromobiphenyl	mg/kg		ND	--	5	
Tetrabromobiphenyl	mg/kg		ND	--	5	
Pentabromobiphenyl	mg/kg		ND	--	5	
Hexabromobiphenyl	mg/kg		ND	--	5	
Heptabromobiphenyl	mg/kg		ND	--	5	
Octabromobiphenyl	mg/kg		ND	--	5	
Nonabromobiphenyl	mg/kg		ND	--	5	
Decabromobiphenyl	mg/kg		ND	--	5	
Sum of PBDEs	mg/kg		--	ND	1000	--
Monobromodiphenyl ether	mg/kg		IEC 62321-6:2015, GC-MS	ND	--	5
Dibromodiphenyl ether	mg/kg	ND		--	5	
Tribromodiphenyl ether	mg/kg	ND		--	5	
Tetrabromodiphenyl ether	mg/kg	ND		--	5	
Pentabromodiphenyl ether	mg/kg	ND		--	5	
Hexabromodiphenyl ether	mg/kg	ND		--	5	
Heptabromodiphenyl ether	mg/kg	ND		--	5	
Octabromodiphenyl ether	mg/kg	ND		--	5	
Nonabromodiphenyl ether	mg/kg	ND		--	5	
Decabromodiphenyl ether	mg/kg	ND		--	5	
Bis (2-ethylhexyl)-phthalate (DEHP)	mg/kg	IEC 62321-8:2017, GC-MS		ND	1000	50
Dibutyl phthalate (DBP)	mg/kg			ND	1000	50
Benzylbutyl phthalate (BBP)	mg/kg		ND	1000	50	
Diisobutyl phthalate (DIBP)	mg/kg		ND	1000	50	
Conclusion	--	--	Pass	--	--	



Report No.: WTF25F01018676R1C

Job No.: FSW2501210883CJ

Test Item(s)	Unit	Test Method & Test Equipment	Result	Limit	LOQ	
			No.12			
Lead (Pb)	mg/kg	IEC 62321-5:2013, ICP-OES	ND	1000	2	
Cadmium (Cd)	mg/kg	IEC 62321-5:2013, ICP-OES	ND	100	2	
Mercury (Hg)	mg/kg	IEC62321-4:2013+AMD1:2017 CSV, ICP-OES	ND	1000	2	
Hexavalent Chromium (Cr ⁶⁺)	mg/kg	IEC 62321-7-2:2017, UV-Vis	ND	1000	8	
Sum of PBBs	mg/kg	--	ND	1000	--	
Monobromobiphenyl	mg/kg	IEC 62321-6:2015, GC-MS	ND	--	5	
Dibromobiphenyl	mg/kg		ND	--	5	
Tribromobiphenyl	mg/kg		ND	--	5	
Tetrabromobiphenyl	mg/kg		ND	--	5	
Pentabromobiphenyl	mg/kg		ND	--	5	
Hexabromobiphenyl	mg/kg		ND	--	5	
Heptabromobiphenyl	mg/kg		ND	--	5	
Octabromobiphenyl	mg/kg		ND	--	5	
Nonabromobiphenyl	mg/kg		ND	--	5	
Decabromobiphenyl	mg/kg		ND	--	5	
Sum of PBDEs	mg/kg		--	ND	1000	--
Monobromodiphenyl ether	mg/kg		IEC 62321-6:2015, GC-MS	ND	--	5
Dibromodiphenyl ether	mg/kg	ND		--	5	
Tribromodiphenyl ether	mg/kg	ND		--	5	
Tetrabromodiphenyl ether	mg/kg	ND		--	5	
Pentabromodiphenyl ether	mg/kg	ND		--	5	
Hexabromodiphenyl ether	mg/kg	ND		--	5	
Heptabromodiphenyl ether	mg/kg	ND		--	5	
Octabromodiphenyl ether	mg/kg	ND		--	5	
Nonabromodiphenyl ether	mg/kg	ND		--	5	
Decabromodiphenyl ether	mg/kg	ND		--	5	
Bis (2-ethylhexyl)-phthalate (DEHP)	mg/kg	IEC 62321-8:2017, GC-MS		ND	1000	50
Dibutyl phthalate (DBP)	mg/kg			ND	1000	50
Benzylbutyl phthalate (BBP)	mg/kg		ND	1000	50	
Diisobutyl phthalate (DIBP)	mg/kg		ND	1000	50	
Conclusion	--	--	Pass	--	--	



Report No.: WTF25F01018676R1C

Job No.: FSW2501210883CJ

Test Item(s)	Unit	Test Method & Test Equipment	Result	Limit	LOQ	
			No.13			
Lead (Pb)	mg/kg	IEC 62321-5:2013, ICP-OES	ND	1000	2	
Cadmium (Cd)	mg/kg	IEC 62321-5:2013, ICP-OES	ND	100	2	
Mercury (Hg)	mg/kg	IEC62321-4:2013+AMD1:2017 CSV, ICP-OES	ND	1000	2	
Hexavalent Chromium (Cr ⁶⁺)	mg/kg	IEC 62321-7-2:2017, UV-Vis	ND	1000	8	
Sum of PBBs	mg/kg	--	ND	1000	--	
Monobromobiphenyl	mg/kg	IEC 62321-6:2015, GC-MS	ND	--	5	
Dibromobiphenyl	mg/kg		ND	--	5	
Tribromobiphenyl	mg/kg		ND	--	5	
Tetrabromobiphenyl	mg/kg		ND	--	5	
Pentabromobiphenyl	mg/kg		ND	--	5	
Hexabromobiphenyl	mg/kg		ND	--	5	
Heptabromobiphenyl	mg/kg		ND	--	5	
Octabromobiphenyl	mg/kg		ND	--	5	
Nonabromobiphenyl	mg/kg		ND	--	5	
Decabromobiphenyl	mg/kg		ND	--	5	
Sum of PBDEs	mg/kg		--	ND	1000	--
Monobromodiphenyl ether	mg/kg		IEC 62321-6:2015, GC-MS	ND	--	5
Dibromodiphenyl ether	mg/kg	ND		--	5	
Tribromodiphenyl ether	mg/kg	ND		--	5	
Tetrabromodiphenyl ether	mg/kg	ND		--	5	
Pentabromodiphenyl ether	mg/kg	ND		--	5	
Hexabromodiphenyl ether	mg/kg	ND		--	5	
Heptabromodiphenyl ether	mg/kg	ND		--	5	
Octabromodiphenyl ether	mg/kg	ND		--	5	
Nonabromodiphenyl ether	mg/kg	ND		--	5	
Decabromodiphenyl ether	mg/kg	ND		--	5	
Bis (2-ethylhexyl)-phthalate (DEHP)	mg/kg	IEC 62321-8:2017, GC-MS		ND	1000	50
Dibutyl phthalate (DBP)	mg/kg			ND	1000	50
Benzylbutyl phthalate (BBP)	mg/kg		ND	1000	50	
Diisobutyl phthalate (DIBP)	mg/kg		ND	1000	50	
Conclusion	--	--	Pass	--	--	



Report No.: WTF25F01018676R1C

Job No.: FSW2501210883CJ

Test Item(s)	Unit	Test Method & Test Equipment	Result	Limit	LOQ	
			No.14			
Lead (Pb)	mg/kg	IEC 62321-5:2013, ICP-OES	ND	1000	2	
Cadmium (Cd)	mg/kg	IEC 62321-5:2013, ICP-OES	ND	100	2	
Mercury (Hg)	mg/kg	IEC62321-4:2013+AMD1:2017 CSV, ICP-OES	ND	1000	2	
Hexavalent Chromium (Cr ⁶⁺)	mg/kg	IEC 62321-7-2:2017, UV-Vis	ND	1000	8	
Sum of PBBs	mg/kg	--	ND	1000	--	
Monobromobiphenyl	mg/kg	IEC 62321-6:2015, GC-MS	ND	--	5	
Dibromobiphenyl	mg/kg		ND	--	5	
Tribromobiphenyl	mg/kg		ND	--	5	
Tetrabromobiphenyl	mg/kg		ND	--	5	
Pentabromobiphenyl	mg/kg		ND	--	5	
Hexabromobiphenyl	mg/kg		ND	--	5	
Heptabromobiphenyl	mg/kg		ND	--	5	
Octabromobiphenyl	mg/kg		ND	--	5	
Nonabromobiphenyl	mg/kg		ND	--	5	
Decabromobiphenyl	mg/kg		ND	--	5	
Sum of PBDEs	mg/kg		--	ND	1000	--
Monobromodiphenyl ether	mg/kg		IEC 62321-6:2015, GC-MS	ND	--	5
Dibromodiphenyl ether	mg/kg	ND		--	5	
Tribromodiphenyl ether	mg/kg	ND		--	5	
Tetrabromodiphenyl ether	mg/kg	ND		--	5	
Pentabromodiphenyl ether	mg/kg	ND		--	5	
Hexabromodiphenyl ether	mg/kg	ND		--	5	
Heptabromodiphenyl ether	mg/kg	ND		--	5	
Octabromodiphenyl ether	mg/kg	ND		--	5	
Nonabromodiphenyl ether	mg/kg	ND		--	5	
Decabromodiphenyl ether	mg/kg	ND		--	5	
Bis (2-ethylhexyl)-phthalate (DEHP)	mg/kg	IEC 62321-8:2017, GC-MS		ND	1000	50
Dibutyl phthalate (DBP)	mg/kg			ND	1000	50
Benzylbutyl phthalate (BBP)	mg/kg		ND	1000	50	
Diisobutyl phthalate (DIBP)	mg/kg		ND	1000	50	
Conclusion	--	--	Pass	--	--	



Report No.: WTF25F01018676R1C

Job No.: FSW2501210883CJ

Test Item(s)	Unit	Test Method & Test Equipment	Result	Limit	LOQ	
			No.15			
Lead (Pb)	mg/kg	IEC 62321-5:2013, ICP-OES	ND	1000	2	
Cadmium (Cd)	mg/kg	IEC 62321-5:2013, ICP-OES	ND	100	2	
Mercury (Hg)	mg/kg	IEC62321-4:2013+AMD1:2017 CSV, ICP-OES	ND	1000	2	
Hexavalent Chromium (Cr ⁶⁺)	mg/kg	IEC 62321-7-2:2017, UV-Vis	ND	1000	8	
Sum of PBBs	mg/kg	--	ND	1000	--	
Monobromobiphenyl	mg/kg	IEC 62321-6:2015, GC-MS	ND	--	5	
Dibromobiphenyl	mg/kg		ND	--	5	
Tribromobiphenyl	mg/kg		ND	--	5	
Tetrabromobiphenyl	mg/kg		ND	--	5	
Pentabromobiphenyl	mg/kg		ND	--	5	
Hexabromobiphenyl	mg/kg		ND	--	5	
Heptabromobiphenyl	mg/kg		ND	--	5	
Octabromobiphenyl	mg/kg		ND	--	5	
Nonabromobiphenyl	mg/kg		ND	--	5	
Decabromobiphenyl	mg/kg		ND	--	5	
Sum of PBDEs	mg/kg		--	ND	1000	--
Monobromodiphenyl ether	mg/kg		IEC 62321-6:2015, GC-MS	ND	--	5
Dibromodiphenyl ether	mg/kg	ND		--	5	
Tribromodiphenyl ether	mg/kg	ND		--	5	
Tetrabromodiphenyl ether	mg/kg	ND		--	5	
Pentabromodiphenyl ether	mg/kg	ND		--	5	
Hexabromodiphenyl ether	mg/kg	ND		--	5	
Heptabromodiphenyl ether	mg/kg	ND		--	5	
Octabromodiphenyl ether	mg/kg	ND		--	5	
Nonabromodiphenyl ether	mg/kg	ND		--	5	
Decabromodiphenyl ether	mg/kg	ND		--	5	
Bis (2-ethylhexyl)-phthalate (DEHP)	mg/kg	IEC 62321-8:2017, GC-MS		ND	1000	50
Dibutyl phthalate (DBP)	mg/kg			ND	1000	50
Benzylbutyl phthalate (BBP)	mg/kg		ND	1000	50	
Diisobutyl phthalate (DIBP)	mg/kg		ND	1000	50	
Conclusion	--	--	Pass	--	--	



Report No.: WTF25F01018676R1C

Job No.: FSW2501210883CJ

Test Item(s)	Unit	Test Method & Test Equipment	Result	Limit	LOQ	
			No.16			
Lead (Pb)	mg/kg	IEC 62321-5:2013, ICP-OES	ND	1000	2	
Cadmium (Cd)	mg/kg	IEC 62321-5:2013, ICP-OES	ND	100	2	
Mercury (Hg)	mg/kg	IEC62321-4:2013+AMD1:2017 CSV, ICP-OES	ND	1000	2	
Hexavalent Chromium (Cr ⁶⁺)	mg/kg	IEC 62321-7-2:2017, UV-Vis	ND	1000	8	
Sum of PBBs	mg/kg	--	ND	1000	--	
Monobromobiphenyl	mg/kg	IEC 62321-6:2015, GC-MS	ND	--	5	
Dibromobiphenyl	mg/kg		ND	--	5	
Tribromobiphenyl	mg/kg		ND	--	5	
Tetrabromobiphenyl	mg/kg		ND	--	5	
Pentabromobiphenyl	mg/kg		ND	--	5	
Hexabromobiphenyl	mg/kg		ND	--	5	
Heptabromobiphenyl	mg/kg		ND	--	5	
Octabromobiphenyl	mg/kg		ND	--	5	
Nonabromobiphenyl	mg/kg		ND	--	5	
Decabromobiphenyl	mg/kg		ND	--	5	
Sum of PBDEs	mg/kg		--	ND	1000	--
Monobromodiphenyl ether	mg/kg		IEC 62321-6:2015, GC-MS	ND	--	5
Dibromodiphenyl ether	mg/kg	ND		--	5	
Tribromodiphenyl ether	mg/kg	ND		--	5	
Tetrabromodiphenyl ether	mg/kg	ND		--	5	
Pentabromodiphenyl ether	mg/kg	ND		--	5	
Hexabromodiphenyl ether	mg/kg	ND		--	5	
Heptabromodiphenyl ether	mg/kg	ND		--	5	
Octabromodiphenyl ether	mg/kg	ND		--	5	
Nonabromodiphenyl ether	mg/kg	ND		--	5	
Decabromodiphenyl ether	mg/kg	ND		--	5	
Bis (2-ethylhexyl)-phthalate (DEHP)	mg/kg	IEC 62321-8:2017, GC-MS		ND	1000	50
Dibutyl phthalate (DBP)	mg/kg			ND	1000	50
Benzylbutyl phthalate (BBP)	mg/kg		ND	1000	50	
Diisobutyl phthalate (DIBP)	mg/kg		ND	1000	50	
Conclusion	--	--	Pass	--	--	



Report No.: WTF25F01018676R1C

Job No.: FSW2501210883CJ

Test Item(s)	Unit	Test Method & Test Equipment	Result	Limit	LOQ	
			No.17			
Lead (Pb)	mg/kg	IEC 62321-5:2013, ICP-OES	ND	1000	2	
Cadmium (Cd)	mg/kg	IEC 62321-5:2013, ICP-OES	ND	100	2	
Mercury (Hg)	mg/kg	IEC62321-4:2013+AMD1:2017 CSV, ICP-OES	ND	1000	2	
Hexavalent Chromium (Cr ⁶⁺)	mg/kg	IEC 62321-7-2:2017, UV-Vis	ND	1000	8	
Sum of PBBs	mg/kg	--	ND	1000	--	
Monobromobiphenyl	mg/kg	IEC 62321-6:2015, GC-MS	ND	--	5	
Dibromobiphenyl	mg/kg		ND	--	5	
Tribromobiphenyl	mg/kg		ND	--	5	
Tetrabromobiphenyl	mg/kg		ND	--	5	
Pentabromobiphenyl	mg/kg		ND	--	5	
Hexabromobiphenyl	mg/kg		ND	--	5	
Heptabromobiphenyl	mg/kg		ND	--	5	
Octabromobiphenyl	mg/kg		ND	--	5	
Nonabromobiphenyl	mg/kg		ND	--	5	
Decabromobiphenyl	mg/kg		ND	--	5	
Sum of PBDEs	mg/kg		--	ND	1000	--
Monobromodiphenyl ether	mg/kg		IEC 62321-6:2015, GC-MS	ND	--	5
Dibromodiphenyl ether	mg/kg	ND		--	5	
Tribromodiphenyl ether	mg/kg	ND		--	5	
Tetrabromodiphenyl ether	mg/kg	ND		--	5	
Pentabromodiphenyl ether	mg/kg	ND		--	5	
Hexabromodiphenyl ether	mg/kg	ND		--	5	
Heptabromodiphenyl ether	mg/kg	ND		--	5	
Octabromodiphenyl ether	mg/kg	ND		--	5	
Nonabromodiphenyl ether	mg/kg	ND		--	5	
Decabromodiphenyl ether	mg/kg	ND		--	5	
Bis (2-ethylhexyl)-phthalate (DEHP)	mg/kg	IEC 62321-8:2017, GC-MS		ND	1000	50
Dibutyl phthalate (DBP)	mg/kg			ND	1000	50
Benzylbutyl phthalate (BBP)	mg/kg		ND	1000	50	
Diisobutyl phthalate (DIBP)	mg/kg		ND	1000	50	
Conclusion	--	--	Pass	--	--	



Report No.: WTF25F01018676R1C

Job No.: FSW2501210883CJ

Test Item(s)	Unit	Test Method & Test Equipment	Result	Limit	LOQ	
			No.18			
Lead (Pb)	mg/kg	IEC 62321-5:2013, ICP-OES	ND	1000	2	
Cadmium (Cd)	mg/kg	IEC 62321-5:2013, ICP-OES	ND	100	2	
Mercury (Hg)	mg/kg	IEC62321-4:2013+AMD1:2017 CSV, ICP-OES	ND	1000	2	
Hexavalent Chromium (Cr ⁶⁺)	mg/kg	IEC 62321-7-2:2017, UV-Vis	ND	1000	8	
Sum of PBBs	mg/kg	--	ND	1000	--	
Monobromobiphenyl	mg/kg	IEC 62321-6:2015, GC-MS	ND	--	5	
Dibromobiphenyl	mg/kg		ND	--	5	
Tribromobiphenyl	mg/kg		ND	--	5	
Tetrabromobiphenyl	mg/kg		ND	--	5	
Pentabromobiphenyl	mg/kg		ND	--	5	
Hexabromobiphenyl	mg/kg		ND	--	5	
Heptabromobiphenyl	mg/kg		ND	--	5	
Octabromobiphenyl	mg/kg		ND	--	5	
Nonabromobiphenyl	mg/kg		ND	--	5	
Decabromobiphenyl	mg/kg		ND	--	5	
Sum of PBDEs	mg/kg		--	ND	1000	--
Monobromodiphenyl ether	mg/kg		IEC 62321-6:2015, GC-MS	ND	--	5
Dibromodiphenyl ether	mg/kg	ND		--	5	
Tribromodiphenyl ether	mg/kg	ND		--	5	
Tetrabromodiphenyl ether	mg/kg	ND		--	5	
Pentabromodiphenyl ether	mg/kg	ND		--	5	
Hexabromodiphenyl ether	mg/kg	ND		--	5	
Heptabromodiphenyl ether	mg/kg	ND		--	5	
Octabromodiphenyl ether	mg/kg	ND		--	5	
Nonabromodiphenyl ether	mg/kg	ND		--	5	
Decabromodiphenyl ether	mg/kg	ND		--	5	
Bis (2-ethylhexyl)-phthalate (DEHP)	mg/kg	IEC 62321-8:2017, GC-MS		ND	1000	50
Dibutyl phthalate (DBP)	mg/kg			ND	1000	50
Benzylbutyl phthalate (BBP)	mg/kg		ND	1000	50	
Diisobutyl phthalate (DIBP)	mg/kg		ND	1000	50	
Conclusion	--	--	Pass	--	--	



Report No.: WTF25F01018676R1C

Job No.: FSW2501210883CJ

Test Item(s)	Unit	Test Method & Test Equipment	Result	Limit	LOQ	
			No.19			
Lead (Pb)	mg/kg	IEC 62321-5:2013, ICP-OES	ND	1000	2	
Cadmium (Cd)	mg/kg	IEC 62321-5:2013, ICP-OES	ND	100	2	
Mercury (Hg)	mg/kg	IEC62321-4:2013+AMD1:2017 CSV, ICP-OES	ND	1000	2	
Hexavalent Chromium (Cr ⁶⁺)	mg/kg	IEC 62321-7-2:2017, UV-Vis	ND	1000	8	
Sum of PBBs	mg/kg	--	ND	1000	--	
Monobromobiphenyl	mg/kg	IEC 62321-6:2015, GC-MS	ND	--	5	
Dibromobiphenyl	mg/kg		ND	--	5	
Tribromobiphenyl	mg/kg		ND	--	5	
Tetrabromobiphenyl	mg/kg		ND	--	5	
Pentabromobiphenyl	mg/kg		ND	--	5	
Hexabromobiphenyl	mg/kg		ND	--	5	
Heptabromobiphenyl	mg/kg		ND	--	5	
Octabromobiphenyl	mg/kg		ND	--	5	
Nonabromobiphenyl	mg/kg		ND	--	5	
Decabromobiphenyl	mg/kg		ND	--	5	
Sum of PBDEs	mg/kg		--	ND	1000	--
Monobromodiphenyl ether	mg/kg		IEC 62321-6:2015, GC-MS	ND	--	5
Dibromodiphenyl ether	mg/kg	ND		--	5	
Tribromodiphenyl ether	mg/kg	ND		--	5	
Tetrabromodiphenyl ether	mg/kg	ND		--	5	
Pentabromodiphenyl ether	mg/kg	ND		--	5	
Hexabromodiphenyl ether	mg/kg	ND		--	5	
Heptabromodiphenyl ether	mg/kg	ND		--	5	
Octabromodiphenyl ether	mg/kg	ND		--	5	
Nonabromodiphenyl ether	mg/kg	ND		--	5	
Decabromodiphenyl ether	mg/kg	ND		--	5	
Bis (2-ethylhexyl)-phthalate (DEHP)	mg/kg	IEC 62321-8:2017, GC-MS		ND	1000	50
Dibutyl phthalate (DBP)	mg/kg			ND	1000	50
Benzylbutyl phthalate (BBP)	mg/kg		ND	1000	50	
Diisobutyl phthalate (DIBP)	mg/kg		ND	1000	50	
Conclusion	--	--	Pass	--	--	



Report No.: WTF25F01018676R1C

Job No.: FSW2501210883CJ

Test Item(s)	Unit	Test Method & Test Equipment	Result	Limit	LOQ	
			No.20			
Lead (Pb)	mg/kg	IEC 62321-5:2013, ICP-OES	ND	1000	2	
Cadmium (Cd)	mg/kg	IEC 62321-5:2013, ICP-OES	ND	100	2	
Mercury (Hg)	mg/kg	IEC62321-4:2013+AMD1:2017 CSV, ICP-OES	ND	1000	2	
Hexavalent Chromium (Cr ⁶⁺)	mg/kg	IEC 62321-7-2:2017, UV-Vis	ND	1000	8	
Sum of PBBs	mg/kg	--	ND	1000	--	
Monobromobiphenyl	mg/kg	IEC 62321-6:2015, GC-MS	ND	--	5	
Dibromobiphenyl	mg/kg		ND	--	5	
Tribromobiphenyl	mg/kg		ND	--	5	
Tetrabromobiphenyl	mg/kg		ND	--	5	
Pentabromobiphenyl	mg/kg		ND	--	5	
Hexabromobiphenyl	mg/kg		ND	--	5	
Heptabromobiphenyl	mg/kg		ND	--	5	
Octabromobiphenyl	mg/kg		ND	--	5	
Nonabromobiphenyl	mg/kg		ND	--	5	
Decabromobiphenyl	mg/kg		ND	--	5	
Sum of PBDEs	mg/kg		--	ND	1000	--
Monobromodiphenyl ether	mg/kg		IEC 62321-6:2015, GC-MS	ND	--	5
Dibromodiphenyl ether	mg/kg	ND		--	5	
Tribromodiphenyl ether	mg/kg	ND		--	5	
Tetrabromodiphenyl ether	mg/kg	ND		--	5	
Pentabromodiphenyl ether	mg/kg	ND		--	5	
Hexabromodiphenyl ether	mg/kg	ND		--	5	
Heptabromodiphenyl ether	mg/kg	ND		--	5	
Octabromodiphenyl ether	mg/kg	ND		--	5	
Nonabromodiphenyl ether	mg/kg	ND		--	5	
Decabromodiphenyl ether	mg/kg	ND		--	5	
Bis (2-ethylhexyl)-phthalate (DEHP)	mg/kg	IEC 62321-8:2017, GC-MS		ND	1000	50
Dibutyl phthalate (DBP)	mg/kg			ND	1000	50
Benzylbutyl phthalate (BBP)	mg/kg		ND	1000	50	
Diisobutyl phthalate (DIBP)	mg/kg		ND	1000	50	
Conclusion	--	--	Pass	--	--	



Report No.: WTF25F01018676R1C

Job No.: FSW2501210883CJ

Test Item(s)	Unit	Test Method & Test Equipment	Result	Limit	LOQ	
			No.21			
Lead (Pb)	mg/kg	IEC 62321-5:2013, ICP-OES	ND	1000	2	
Cadmium (Cd)	mg/kg	IEC 62321-5:2013, ICP-OES	ND	100	2	
Mercury (Hg)	mg/kg	IEC62321-4:2013+AMD1:2017 CSV, ICP-OES	ND	1000	2	
Hexavalent Chromium (Cr ⁶⁺)	mg/kg	IEC 62321-7-2:2017, UV-Vis	ND	1000	8	
Sum of PBBs	mg/kg	--	ND	1000	--	
Monobromobiphenyl	mg/kg	IEC 62321-6:2015, GC-MS	ND	--	5	
Dibromobiphenyl	mg/kg		ND	--	5	
Tribromobiphenyl	mg/kg		ND	--	5	
Tetrabromobiphenyl	mg/kg		ND	--	5	
Pentabromobiphenyl	mg/kg		ND	--	5	
Hexabromobiphenyl	mg/kg		ND	--	5	
Heptabromobiphenyl	mg/kg		ND	--	5	
Octabromobiphenyl	mg/kg		ND	--	5	
Nonabromobiphenyl	mg/kg		ND	--	5	
Decabromobiphenyl	mg/kg		ND	--	5	
Sum of PBDEs	mg/kg		--	ND	1000	--
Monobromodiphenyl ether	mg/kg		IEC 62321-6:2015, GC-MS	ND	--	5
Dibromodiphenyl ether	mg/kg	ND		--	5	
Tribromodiphenyl ether	mg/kg	ND		--	5	
Tetrabromodiphenyl ether	mg/kg	ND		--	5	
Pentabromodiphenyl ether	mg/kg	ND		--	5	
Hexabromodiphenyl ether	mg/kg	ND		--	5	
Heptabromodiphenyl ether	mg/kg	ND		--	5	
Octabromodiphenyl ether	mg/kg	ND		--	5	
Nonabromodiphenyl ether	mg/kg	ND		--	5	
Decabromodiphenyl ether	mg/kg	ND		--	5	
Bis (2-ethylhexyl)-phthalate (DEHP)	mg/kg	IEC 62321-8:2017, GC-MS		ND	1000	50
Dibutyl phthalate (DBP)	mg/kg			ND	1000	50
Benzylbutyl phthalate (BBP)	mg/kg		ND	1000	50	
Diisobutyl phthalate (DIBP)	mg/kg		ND	1000	50	
Conclusion	--	--	Pass	--	--	



Report No.: WTF25F01018676R1C

Job No.: FSW2501210883CJ

Test Item(s)	Unit	Test Method & Test Equipment	Result	Limit	LOQ	
			No.22			
Lead (Pb)	mg/kg	IEC 62321-5:2013, ICP-OES	ND	1000	2	
Cadmium (Cd)	mg/kg	IEC 62321-5:2013, ICP-OES	ND	100	2	
Mercury (Hg)	mg/kg	IEC62321-4:2013+AMD1:2017 CSV, ICP-OES	ND	1000	2	
Hexavalent Chromium (Cr ⁶⁺)	mg/kg	IEC 62321-7-2:2017, UV-Vis	ND	1000	8	
Sum of PBBs	mg/kg	--	ND	1000	--	
Monobromobiphenyl	mg/kg	IEC 62321-6:2015, GC-MS	ND	--	5	
Dibromobiphenyl	mg/kg		ND	--	5	
Tribromobiphenyl	mg/kg		ND	--	5	
Tetrabromobiphenyl	mg/kg		ND	--	5	
Pentabromobiphenyl	mg/kg		ND	--	5	
Hexabromobiphenyl	mg/kg		ND	--	5	
Heptabromobiphenyl	mg/kg		ND	--	5	
Octabromobiphenyl	mg/kg		ND	--	5	
Nonabromobiphenyl	mg/kg		ND	--	5	
Decabromobiphenyl	mg/kg		ND	--	5	
Sum of PBDEs	mg/kg		--	ND	1000	--
Monobromodiphenyl ether	mg/kg		IEC 62321-6:2015, GC-MS	ND	--	5
Dibromodiphenyl ether	mg/kg	ND		--	5	
Tribromodiphenyl ether	mg/kg	ND		--	5	
Tetrabromodiphenyl ether	mg/kg	ND		--	5	
Pentabromodiphenyl ether	mg/kg	ND		--	5	
Hexabromodiphenyl ether	mg/kg	ND		--	5	
Heptabromodiphenyl ether	mg/kg	ND		--	5	
Octabromodiphenyl ether	mg/kg	ND		--	5	
Nonabromodiphenyl ether	mg/kg	ND		--	5	
Decabromodiphenyl ether	mg/kg	ND		--	5	
Bis (2-ethylhexyl)-phthalate (DEHP)	mg/kg	IEC 62321-8:2017, GC-MS		ND	1000	50
Dibutyl phthalate (DBP)	mg/kg			ND	1000	50
Benzylbutyl phthalate (BBP)	mg/kg		ND	1000	50	
Diisobutyl phthalate (DIBP)	mg/kg		ND	1000	50	
Conclusion	--	--	Pass	--	--	



Report No.: WTF25F01018676R1C

Job No.: FSW2501210883CJ

Test Item(s)	Unit	Test Method & Test Equipment	Result	Limit	LOQ	
			No.23			
Lead (Pb)	mg/kg	IEC 62321-5:2013, ICP-OES	ND	1000	2	
Cadmium (Cd)	mg/kg	IEC 62321-5:2013, ICP-OES	ND	100	2	
Mercury (Hg)	mg/kg	IEC62321-4:2013+AMD1:2017 CSV, ICP-OES	ND	1000	2	
Hexavalent Chromium (Cr ⁶⁺)	mg/kg	IEC 62321-7-2:2017, UV-Vis	ND	1000	8	
Sum of PBBs	mg/kg	--	ND	1000	--	
Monobromobiphenyl	mg/kg	IEC 62321-6:2015, GC-MS	ND	--	5	
Dibromobiphenyl	mg/kg		ND	--	5	
Tribromobiphenyl	mg/kg		ND	--	5	
Tetrabromobiphenyl	mg/kg		ND	--	5	
Pentabromobiphenyl	mg/kg		ND	--	5	
Hexabromobiphenyl	mg/kg		ND	--	5	
Heptabromobiphenyl	mg/kg		ND	--	5	
Octabromobiphenyl	mg/kg		ND	--	5	
Nonabromobiphenyl	mg/kg		ND	--	5	
Decabromobiphenyl	mg/kg		ND	--	5	
Sum of PBDEs	mg/kg		--	ND	1000	--
Monobromodiphenyl ether	mg/kg		IEC 62321-6:2015, GC-MS	ND	--	5
Dibromodiphenyl ether	mg/kg	ND		--	5	
Tribromodiphenyl ether	mg/kg	ND		--	5	
Tetrabromodiphenyl ether	mg/kg	ND		--	5	
Pentabromodiphenyl ether	mg/kg	ND		--	5	
Hexabromodiphenyl ether	mg/kg	ND		--	5	
Heptabromodiphenyl ether	mg/kg	ND		--	5	
Octabromodiphenyl ether	mg/kg	ND		--	5	
Nonabromodiphenyl ether	mg/kg	ND		--	5	
Decabromodiphenyl ether	mg/kg	ND		--	5	
Bis (2-ethylhexyl)-phthalate (DEHP)	mg/kg	IEC 62321-8:2017, GC-MS		ND	1000	50
Dibutyl phthalate (DBP)	mg/kg			ND	1000	50
Benzylbutyl phthalate (BBP)	mg/kg		ND	1000	50	
Diisobutyl phthalate (DIBP)	mg/kg		ND	1000	50	
Conclusion	--	--	Pass	--	--	



Report No.: WTF25F01018676R1C

Job No.: FSW2501210883CJ

Test Item(s)	Unit	Test Method & Test Equipment	Result	Limit	LOQ	
			No.24			
Lead (Pb)	mg/kg	IEC 62321-5:2013, ICP-OES	ND	1000	2	
Cadmium (Cd)	mg/kg	IEC 62321-5:2013, ICP-OES	ND	100	2	
Mercury (Hg)	mg/kg	IEC62321-4:2013+AMD1:2017 CSV, ICP-OES	ND	1000	2	
Hexavalent Chromium (Cr ⁶⁺)	mg/kg	IEC 62321-7-2:2017, UV-Vis	ND	1000	8	
Sum of PBBs	mg/kg	--	ND	1000	--	
Monobromobiphenyl	mg/kg	IEC 62321-6:2015, GC-MS	ND	--	5	
Dibromobiphenyl	mg/kg		ND	--	5	
Tribromobiphenyl	mg/kg		ND	--	5	
Tetrabromobiphenyl	mg/kg		ND	--	5	
Pentabromobiphenyl	mg/kg		ND	--	5	
Hexabromobiphenyl	mg/kg		ND	--	5	
Heptabromobiphenyl	mg/kg		ND	--	5	
Octabromobiphenyl	mg/kg		ND	--	5	
Nonabromobiphenyl	mg/kg		ND	--	5	
Decabromobiphenyl	mg/kg		ND	--	5	
Sum of PBDEs	mg/kg		--	ND	1000	--
Monobromodiphenyl ether	mg/kg		IEC 62321-6:2015, GC-MS	ND	--	5
Dibromodiphenyl ether	mg/kg	ND		--	5	
Tribromodiphenyl ether	mg/kg	ND		--	5	
Tetrabromodiphenyl ether	mg/kg	ND		--	5	
Pentabromodiphenyl ether	mg/kg	ND		--	5	
Hexabromodiphenyl ether	mg/kg	ND		--	5	
Heptabromodiphenyl ether	mg/kg	ND		--	5	
Octabromodiphenyl ether	mg/kg	ND		--	5	
Nonabromodiphenyl ether	mg/kg	ND		--	5	
Decabromodiphenyl ether	mg/kg	ND		--	5	
Bis (2-ethylhexyl)-phthalate (DEHP)	mg/kg	IEC 62321-8:2017, GC-MS		ND	1000	50
Dibutyl phthalate (DBP)	mg/kg			ND	1000	50
Benzylbutyl phthalate (BBP)	mg/kg		ND	1000	50	
Diisobutyl phthalate (DIBP)	mg/kg		ND	1000	50	
Conclusion	--	--	Pass	--	--	



Report No.: WTF25F01018676R1C

Job No.: FSW2501210883CJ

Test Item(s)	Unit	Test Method & Test Equipment	Result	Limit	LOQ	
			No.25			
Lead (Pb)	mg/kg	IEC 62321-5:2013, ICP-OES	ND	1000	2	
Cadmium (Cd)	mg/kg	IEC 62321-5:2013, ICP-OES	ND	100	2	
Mercury (Hg)	mg/kg	IEC62321-4:2013+AMD1:2017 CSV, ICP-OES	ND	1000	2	
Hexavalent Chromium (Cr ⁶⁺)	mg/kg	IEC 62321-7-2:2017, UV-Vis	ND	1000	8	
Sum of PBBs	mg/kg	--	ND	1000	--	
Monobromobiphenyl	mg/kg	IEC 62321-6:2015, GC-MS	ND	--	5	
Dibromobiphenyl	mg/kg		ND	--	5	
Tribromobiphenyl	mg/kg		ND	--	5	
Tetrabromobiphenyl	mg/kg		ND	--	5	
Pentabromobiphenyl	mg/kg		ND	--	5	
Hexabromobiphenyl	mg/kg		ND	--	5	
Heptabromobiphenyl	mg/kg		ND	--	5	
Octabromobiphenyl	mg/kg		ND	--	5	
Nonabromobiphenyl	mg/kg		ND	--	5	
Decabromobiphenyl	mg/kg		ND	--	5	
Sum of PBDEs	mg/kg		--	ND	1000	--
Monobromodiphenyl ether	mg/kg		IEC 62321-6:2015, GC-MS	ND	--	5
Dibromodiphenyl ether	mg/kg	ND		--	5	
Tribromodiphenyl ether	mg/kg	ND		--	5	
Tetrabromodiphenyl ether	mg/kg	ND		--	5	
Pentabromodiphenyl ether	mg/kg	ND		--	5	
Hexabromodiphenyl ether	mg/kg	ND		--	5	
Heptabromodiphenyl ether	mg/kg	ND		--	5	
Octabromodiphenyl ether	mg/kg	ND		--	5	
Nonabromodiphenyl ether	mg/kg	ND		--	5	
Decabromodiphenyl ether	mg/kg	ND		--	5	
Bis (2-ethylhexyl)-phthalate (DEHP)	mg/kg	IEC 62321-8:2017, GC-MS		ND	1000	50
Dibutyl phthalate (DBP)	mg/kg			ND	1000	50
Benzylbutyl phthalate (BBP)	mg/kg		ND	1000	50	
Diisobutyl phthalate (DIBP)	mg/kg		ND	1000	50	
Conclusion	--	--	Pass	--	--	



Report No.: WTF25F01018676R1C

Job No.: FSW2501210883CJ

Test Item(s)	Unit	Test Method & Test Equipment	Result	Limit	LOQ	
			No.26			
Lead (Pb)	mg/kg	IEC 62321-5:2013, ICP-OES	ND	1000	2	
Cadmium (Cd)	mg/kg	IEC 62321-5:2013, ICP-OES	ND	100	2	
Mercury (Hg)	mg/kg	IEC62321-4:2013+AMD1:2017 CSV, ICP-OES	ND	1000	2	
Hexavalent Chromium (Cr ⁶⁺)	mg/kg	IEC 62321-7-2:2017, UV-Vis	ND	1000	8	
Sum of PBBs	mg/kg	--	ND	1000	--	
Monobromobiphenyl	mg/kg	IEC 62321-6:2015, GC-MS	ND	--	5	
Dibromobiphenyl	mg/kg		ND	--	5	
Tribromobiphenyl	mg/kg		ND	--	5	
Tetrabromobiphenyl	mg/kg		ND	--	5	
Pentabromobiphenyl	mg/kg		ND	--	5	
Hexabromobiphenyl	mg/kg		ND	--	5	
Heptabromobiphenyl	mg/kg		ND	--	5	
Octabromobiphenyl	mg/kg		ND	--	5	
Nonabromobiphenyl	mg/kg		ND	--	5	
Decabromobiphenyl	mg/kg		ND	--	5	
Sum of PBDEs	mg/kg		--	ND	1000	--
Monobromodiphenyl ether	mg/kg		IEC 62321-6:2015, GC-MS	ND	--	5
Dibromodiphenyl ether	mg/kg	ND		--	5	
Tribromodiphenyl ether	mg/kg	ND		--	5	
Tetrabromodiphenyl ether	mg/kg	ND		--	5	
Pentabromodiphenyl ether	mg/kg	ND		--	5	
Hexabromodiphenyl ether	mg/kg	ND		--	5	
Heptabromodiphenyl ether	mg/kg	ND		--	5	
Octabromodiphenyl ether	mg/kg	ND		--	5	
Nonabromodiphenyl ether	mg/kg	ND		--	5	
Decabromodiphenyl ether	mg/kg	ND		--	5	
Bis (2-ethylhexyl)-phthalate (DEHP)	mg/kg	IEC 62321-8:2017, GC-MS		ND	1000	50
Dibutyl phthalate (DBP)	mg/kg			ND	1000	50
Benzylbutyl phthalate (BBP)	mg/kg		ND	1000	50	
Diisobutyl phthalate (DIBP)	mg/kg		ND	1000	50	
Conclusion	--	--	Pass	--	--	

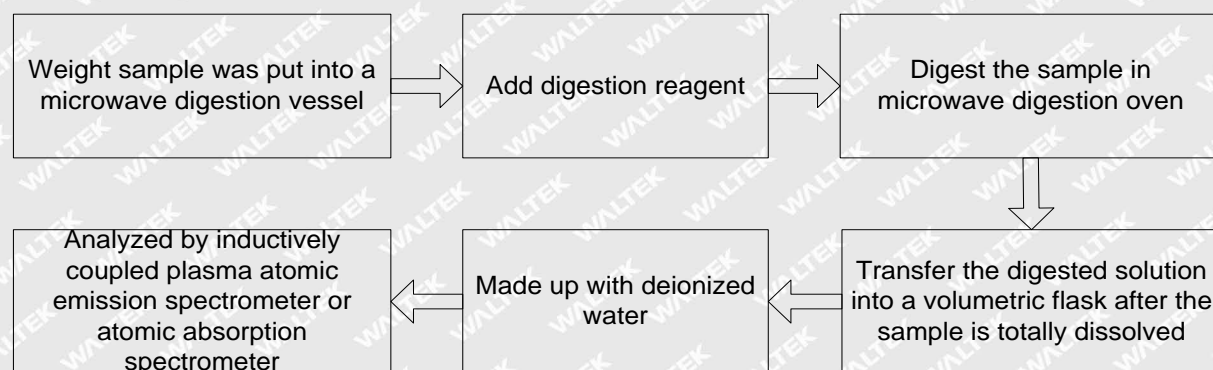


Note:

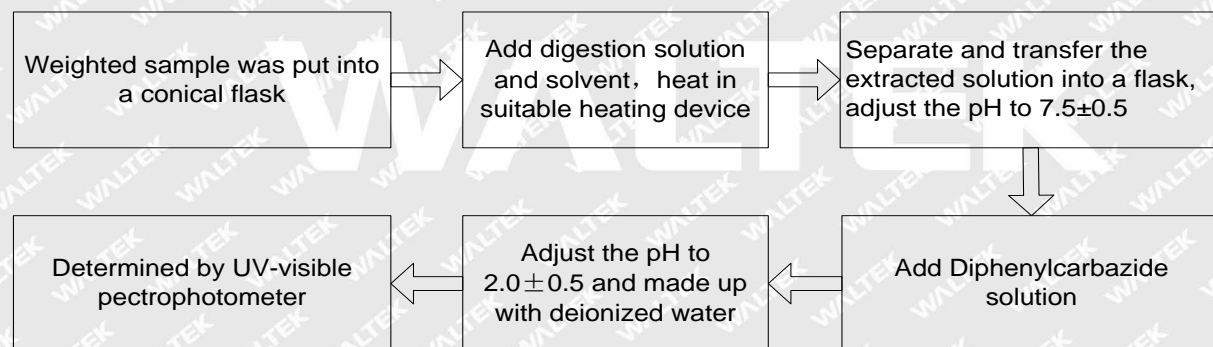
- (1) ND = Not Detected or lower than limit of quantitation
- (2) mg/kg = milligram per kilogram= ppm
- (3) LOQ = Limit of quantitation
- (4) "--" = Not regulated
- (5) The test results were based on the wet weight of the raw material.

Testing Flow chart:

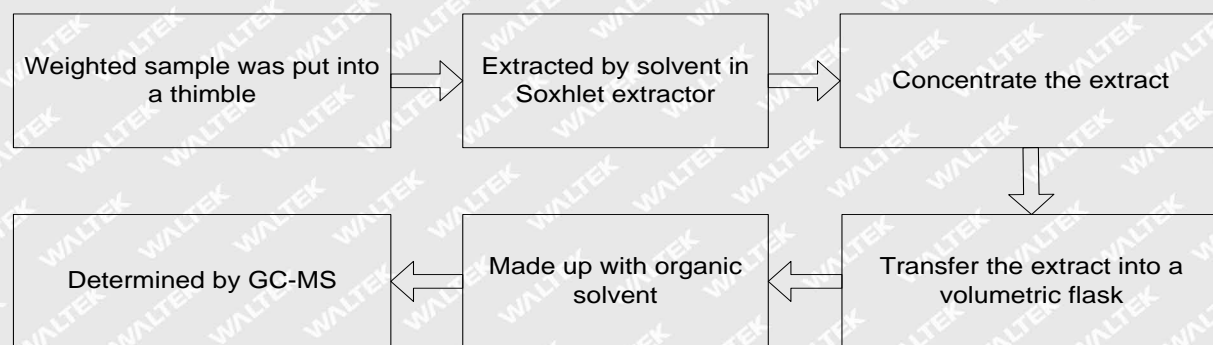
1. Test for Cd/ Pb/ Hg contents



2. Test for Cr⁶⁺ content



3. Test for PBBs/ PBDEs/ DIBP/ DEHP/ DBP/ BBP contents





Report No.: WTF25F01018676R1C

Job No.: FSW2501210883CJ

Remarks:

1. The results shown in this test report refer only to the sample(s) tested;
2. This test report cannot be reproduced, except in full, without prior written permission of the company;
3. The report would be invalid without specific stamp of test institute and the signatures of compiler and approver;
4. The Applicant name and Address, the sample(s) and sample information was/were provided by the applicant who should be responsible for the authenticity which Waltek hasn't verified;
5. If the report is not stamped with the accreditation recognized seal, it will only be used for scientific research, education, and internal quality control activities, and is not used for the purpose of issuing supporting data to the society.
6. The sample material information (Model No. information) is provided by client, not verified by test laboratory. The samples of reference Model No. are not tested. Test laboratory not responsible for the accuracy, appropriateness, completeness and authenticity of the information provided by client.

===== End of Report =====

WALTEK